



MASTER GARDENERS JEFFERSON COUNTY

© Cynthia Elmore 2001

NEWSLETTER

June 2012

Secret Garden Tour 2012 is around the corner!

The Secret Garden Tour is our next big JCMGF event and we can't wait!! It will take place on Saturday, June 16, from 10 am until 4 pm.



The Pre-Tour, our thank you for working on the SGT, is on June 9th. This event is exclusively for SGT volunteers, their partners and the garden owners and allows you free admission to the entire tour. We'll meet at the Jefferson Transit Park and Ride, across from Safeway, at 9:30 am and carpool our way around the circuit as a group. We still need docents for both morning and afternoon and three or four volunteers to put up signage the morning of the tour and take it down at night. If you haven't signed up yet and would like to, please let Kris Burns know as soon as possible. She can be reached at burns_cabin@olypen.com THANKS!!!



Squash Blossoms
By Rita Hollingsworth

Submitted by: Candice Gohn, SGT Chair

Inside this issue:

From the Chair; Summer Foundation Meetings	2
B. I. Garden Field Trip	3
Plant Sale Report	4
Programs Chair; Chick Program; Name that Plant; MG Park Update	5
MG Coordinator's Report; Trainee Graduation	6
Grants and Scholarships	7
Misc; Reading Room; Y&G	8
WCFS cherry tree trial	9
WCFS cherry tree trial Cont.; Biochar talk	10
Sherlock in the Garden	11
Sherlock in the Garden Cont.; Habitat for Humanity Garden Program	12
Name that Plant Answer	13
JCMG Board minutes	14
JCMG Foundation minutes; Kitchen Korner	15
Calendar	16

Plant Swap Possibilities

The June Foundation meeting will be a Plant Swap and our own plant clinic-y Q & A, so bring your extra plants, seeds, cuttings etc to swap and your questions. There may be just the plant you want and just the answer you need!



Some plants that will be offered up to swap are a Japanese Iris, a small pot of tiarelle (ground cover) and two small, one gallon oak-leaf Hydrangeas. Assorted seeds are also available to choose from as well.

Some plant hope fors include *Maiathemum Racemosum* (False Solomon's Seal), wisteria starts, calendula, lupine, hollyhock, herbs and misc ground covers.

Ali Dyche

WASHINGTON STATE UNIVERSITY



JEFFERSON COUNTY EXTENSION

Master Gardener Foundation

Cooperative Extension programs and policies are consistent with federal and state laws and regulations on nondiscrimination regarding race, color, gender, national origin, religion, age, disability, and sexual orientation. Evidence of noncompliance may be reported through your local Cooperative Extension office.

Chair's Eye View of the (Master) Garden



Barbara Schultz tells me that we had a very successful MG Plant Sale on a beautiful day in our wonderful part of the world. I am very sorry to have missed it but was attending the college graduation of my youngest grandchild back in Virginia—a beautiful place—but one that can't hold a candle to ours. They are long past Spring while we are still enjoying our spectacular blooms and the greening of the countryside. At any rate, thanks to all of you for your enthusiastic participation in the Sale.

I am afraid I am also bugging out for most of the next few months. My wife, Cameron, is working at Yellowstone National Park until the end of September at the Yellowstone Lake Hotel. Understandably, I hope, I will be spending most of my time there also. The Foundation's Co-Chair, Janet Mizuguchi, will be stepping forward to lead us during those months. I ask that you give Janet the same support that you have given to me and the Foundation. It will certainly be needed for our annual Secret Garden Tour in June.

I have promised to send Ali Dyche articles and pictures on Yellowstone's famous wildflowers. Even though we probably can't grow them, I hope that you will get a chance to appreciate their beauty.

Have a great summer, Roger



Submitted by: Roger McPherson, JCMGF Chair

Summer Foundation Programs



June— This month we will hold a plant swap. If you have extra plants you'd like to share or you missed out on that special plant you were hoping to get at the MG sale in May, this might be the afternoon for you! Seeds, transplants, potted plants, bare root plants; all are welcome! Bring something to share, take something shared.

July— Due to low attendance at past July Foundation meetings, we will not be holding one this month.



Aug— Our Annual Picnic is held in Aug. This year it will be Saturday, Aug 18. It will be held at Mike and Joy McFadden's house on Lake Leland in Quilcene. Directions will be sent out at a later date.



Submitted by: Janet Mizuguchi

Extension Staff

Phone: (360) 379-5610

Dr. Laura Lewis, ext. 202
WSU Extension Chair
Master Gardener Program Coordinator

Sally Chapin, ext. 200
Receptionist/Office Assistant

JCMGF Foundation Executive Board 2012

Chairperson

Roger McPherson (360) 385-0175
roger76@olympus.net

Co-Chairperson

Janet Mizuguchi (360) 437-8128
rarjsm@msn.com

Secretary

Linda Pfafman (360) 379-1782
lindapfafman@gmail.com

Treasurer

Phil Meany (360) 385-7363
pmeany245@q.com

Board Members:

Pat Aniotzbehere (360) 385-1415
mzmouse82@q.com

Mark Clark (360) 379-4845
sonomarko@yahoo.com

Ali Dyche (360) 732-0433
alibruce113@yahoo.com

Mike McFadden (360) 765-3312
lelandlakehouse@wildblue.net

Marian Meany (360) 385-7363
meany501@olympus.net

MG Coordinator:

Sarah Fairbank (360) 385-2346
sarah@olympus.net

MG Foundation of WA State Rep:

Mark Clark (360) 379-4845
sonomarko@yahoo.com

M.G. NEWSLETTER

Do you have an idea for an article in the newsletter? A book review, a favorite recipe or perhaps an upcoming gardening event? Do you chair an MG committee? Please submit all items for publication to Ali Dyche at **360-732-0433** or via email at alibruce113@yahoo.com, by the **20th** of the month. Thank you!



BAINBRIDGE ISLAND CONSERVANCY GARDENS FIELD TRIP

Due to family needs, Sharon Commander is unable to continue acting as lead on this activity. Two or three MGs are needed to act as go-to people for questions, help organize a carpool etc. Sharon has done most of the leg work and can explain the last few tasks needed to be done to insure the field trip is a go. Please get a hold of her if you are interested in helping out. Her contact info is at the bottom of the page.

Ali Dyché

A field Trip is planned to visit the Conservancy Gardens on Bainbridge Islands on Saturday, June 30th. The five gardens are open from 10 a.m. to 4 p.m. If you have a love for very special gardens, this is a field trip you will not want to miss. These gardens are only open every 5 or 6 years. This is an opportunity to visit some Conservancy Gardens close to home!

The cost of the field trip is \$5.00 per garden. The Gardens include:

Frogwit, featuring several species of Japanese maples, one palm tree and the anchor colors yellow and chartreuse.

Huntley House is a three-and-one-half acre garden featuring all that will grow in this Pacific Northwest island micro-climate.

Osmun Garden is primarily a shade garden designed as a park-like Setting, directing the viewer's eye from one point of interest to another one further on.

Madison Hill Garden is designed to provide color and interest year round. In addition to flowers and shrubs the area includes a pond, a desert garden and a vegetable garden.

The Skyler Garden has pathways through serene surroundings of a variety of perennials and hundreds of ferns. The shade garden is a favorite gathering spot for a variety of birds.

In addition to the five gardens on Bainbridge Island, **Heronswood** in Kingston is also on the tour. This garden-nursery specializes in rare and unusual plants.

If you would like to attend this field trip, please contact Sharon Commander at cmdrs@cablespeed.com or phone her at 437-2486. Educational hours will be awarded for this field trip. We will plan to car pool from Port Townsend Park and Ride leaving at 9:00 a.m. sharp or from Port Ludlow recycle center parking lot at 9:15 a.m. As it gets closer to the date of our trip, I will supply maps and a schedule of gardens stops.



For more information on the gardens, see www.conservancy.org/opendays/open-days-schedule.

Submitted by: Sharon Commander



*Mike and Joy
McFadden's
at Lake
Leland*



*An otter enjoying
the McFadden's
yard*

MASTER GARDENER'S PLANT SALE

The Master Gardener's Plant Sale was an overwhelming success thanks to all the many volunteers. The sale wouldn't have happened without you.

I would like to say thank you to the members of the plant sale committee with special thanks to the exceptional, hard-working Master Gardeners: Ann Klosterman, Erica Iseminger and Bob Grindeland.

We couldn't have had a more perfect day for the sale. The sun was out, the air was warm and the plants were saying "buy me". All the hard work of people donating plants paid off in many plant sales. The plants looked better than many of the commercial nurseries around us and many nice complements were paid.

Phil Meany, our treasurer, reported that the Master Gardener's had a gross income of \$3,329. Out of that number we have to pay the participating four nurseries and our expenses. Come to the next Foundation meeting and find out the net.

The plant committee welcomes any comments and suggestions for the next plant sale in two years. We will be meeting next year to start planning for 2014. Everyone is welcome.

Respectfully submitted,

Barbara Schultz;
Plant Committee

Plants being babied for the sale.



Our "Ask Me" table full of volunteers!



Customers browsing at the wide variety of plants from MGs and local nurseries as well as at the plethora of books offered at our book table.



"Budding" young MGs!



A constant flow of customers at the cashier's tables!

WE NEED A PROGRAMS CHAIR OR CO-CHAIRS



Currently this is being done by our Foundation Board Co-Chair and she is needing to pass on the duties. Janet is more than happy to share what she has been doing the last year to arrange speakers for our monthly educational programs and that might give interested parties some ideas.

June-Aug of 2012 has been set already. Sept-Nov is all that is left to schedule for this year, as Dec is our annual Holiday Party. Another bonus is Island Co (Whidbey) MGs are working with us and other counties to build a Speakers List for the area MGs to create programs from. What a great idea!!

Please keep in mind that several people can take on this task and split up the months. It can be daunting to try to come up with month after month of programming on your own. If you are interested, please contact Janet Mizuguchi at either rarjsm@msn.com or (360) 437-8128.

Ali Dyche

NAME THAT PLANT



Answer on page 13



Here a chick, there a chick, everywhere a chick-chick!!!

On 11 April, we put 12 eggs from my flock into the incubator at the Kindergarten Area of Chimacum school.

We gave a talk on raising chickens to three morning kindergarten classes, one afternoon class, three teachers and an aide (approx. 80). Some of the eggs we used were from year old chickens.

On 2 May, we had three live chicks from the incubator and one dead. One of the Aides took the three chicks. As that was the 21st day, I decided to check the other eggs on 3 May.

Six were not fertile. Two chicks were formed, but died in the shell. Most likely, the shell was too hard for them to crack.

I guess the young chickens that we have were too fast for the roosters, and never got caught.

One of the new aides, stood by the incubator for several minutes and said she was amazed at the process. She was a city girl and had not witnessed the birth of a chick or any animal. She returned several times to observe the baby chicks.



Submitted by: David Self; Chick Program

The Scoop on the Master Gardener Park

After a very rainy, cold spring start, weeds took over in a big way. They are finally under control for the most part, thanks to Erica Iseminger, Dorothy Rath, Ruffin LeBrane and Susan Yadon. If I've missed anyone, I'm sorry.

Due to the fact that the Park is on the Secret Garden Tour, many vacant areas where we lost plants are being filled with color spots, a lot of annuals and some perennials when I could find things that are different, supposedly deer tolerant and don't need staking..

The mulch we applied last year seems to have evaporated, as mulch frequently does, and some areas really need another layer. We may be bringing in a cubic yard to top dress a few areas.

Shirley Williams is heading up a labeling enterprise with the labels that Sarah Fairbank found for us and that will be a big help on SGT day.

We continue to receive a lot of good comments about the Park and how much it is appreciated by the community. Thanks to all of you who have helped so much in making this a beauty spot. I sure couldn't do it without you!

Submitted by: Judith Johnson; Master Gardener Park



MG COORDIATOR'S REPORT



Tonie Fitzgerald, our Statewide MG Program leader came from Spokane to visit us last Friday. She met with 10 MGs and Laura Lewis. She told us that she was hired about 5 years ago by WSU to bring continuity to all the MGs in Washington.

Tonie has developed many resource for our use. Please check them out on the web:mastergardener.wsu.edu/staffvolunteer.html She is helping all of us develop consistent, quality , research based information, which complies with WSU policy to further the mission of Extension which is education and outreach in our community.

She explained some of the hitches in getting all the counties up to speed with online training and told us that this year the online component has been fairly smooth.

There is a DVD available to any certified MG at the cost of \$70 (payable to WSU) which will give you all the information and exercises on the online training including the new textbook. The link to get to that is cumbersome and Tonie is working to make it more accessible. On a further note: one of our 2012 trainees, Joan Oakland has taken on the task of indexing the new 650+ page textbook, a much need addition. Thank you, Joan!

Tonie also stated that the role of the JCMGF is to support WSU Extension programs which provide science based education. The "county faculty develops the needs in the community and MGs are the vehicle to the method needs."

There is a very interesting breakdown of all that MGs do for their communities on the above website. Find Tools for Program Management and then click on End of Year Reporting. Read it and take a bow or curtsy please. You are all very valuable resources!

Submitted by: Sarah Fairbank, MG Coordinator

WELCOME THE 2012 JCMGF GRADUATES!



On Wednesday, May 30th, our 2012 Master Gardener Trainees graduated!! They are an enthusiastic group and will be an asset to JCMGF! Welcome!!!



Submitted by: Sarah Fairbank and Candice Gohn; MG Training

Grants/Scholarship Committee Announces Spring

You did it again!!! Your hard work in fund raising supported a scholarship and seven wonderful community projects. We are proud to present the awardees of the Spring Granting period. The funds give back to the community who supported our events, but first and foremost, the granting process not only provides education of sustainable horticulture, (researching and writing the grant), but provides the ultimate end point of the learning process, the application of that knowledge in their gardens.

The Grants committee met April 23 and at the board meeting in May, the board approved a scholarship and 7 Grants for a total of \$5399. We will reserve \$1500 to fund training seminars /workshops, leaving \$3101 for the fall grant period out of the \$10,000 budgeted for the year. Because relevant training is offered throughout the year, training applications will be accepted at any time during the year. Please call Shirley Williams at 360-301-4087 or email at gswilli@earthlink.net for more information. The deadline to receive grant applications for the fall period is October 1, 2012.

Scholarship Award:

The committee awarded \$1500 to Griffin Weir Hoins, a senior at Chimacum High School. He plans to major in biology with a focus toward marine biology. The committee was impressed with his grades, a GPA of 3.96 but also with his volunteer activities, which included living with a family in Thailand and immersing himself in their culture as he taught in the village school. He also helped count fish as part of the Island School and Cape Eleuthera Institute Aqua Culture Program project which is concerned with conserving wild marine populations in the Bahamas. This summer, he will take a job with the Department of Natural Resources Submerged Vegetation Monitoring project conducting eelgrass surveys in Puget Sound.

Grant funds awarded to:

Jefferson County Historical Society for the Rothschild House's New Lavender Garden, Washington's smallest state park at the corner of Taylor and Franklin, Port Townsend: The roses planted in 1956 were declining and ravaged by deer. The volunteer gardening staff determined that deer resistant lavender would be more appropriate since lavender was widely planted in Victorian gardens and the harvested lavender could be sold to provide funds for maintenance of the garden. The Jefferson County Historical Society maintains the gardens surrounding this house built by an early Port Townsend merchant, Henry Rothschild. The house and gardens are open to the public.

Castle Hill Community Garden, for a New Deer Fence at the garden at 8th and Grant St.:

This community garden is maintained and enjoyed by persons on limited income and those with disabilities. They grow year round crops. We provided funds to start the garden in 2009 with a net deer fence, which is now beyond repair. The volunteers plan to extend the garden and build a substantial wire deer fence.

Quilcene Beautification Committee for the Irrigation System, Quilcene School Entrance Garden, Quilcene School, Highway 101 Quilcene, WA: This committee was established in 2011 to renovate existing public landscaping and add public gardens to enhance the local community, the most notable recent completion, the Gateway Garden south of Quilcene. This volunteer committee asked for money to install a drip irrigation system to water installed plantings along the school fence line which fronts Highway 101. It will provide educational opportunities for the school garden club to maintain the plants that are appropriate for this climate zone.

North Beach Community Garden, Hill St and 58th for a new hose:

This active garden, which has been ongoing for 24 years, grows food for residents as well as the food bank. The instructional information created from their blueberry garden project we funded last year has graced our web page.

Master Gardener Organic Food Demonstration Garden:

The plan is evolving for this garden and we will have more details later.

Northwest School of Wooden Boat Building, for Tools and fencing, the Tree Planting Project, 42 N. Water St, Port Hadlock, WA.:

The school is located on a hillside that was a former rock quarry. The volunteers have begun clearing scotch broom and blackberries from the hill around the workshop. They have planted 200 native trees and 50 shrubs but need fencing to protect the smaller plants in a holding nursery and some tools. The school determined that students should have an appreciation for the material that they work with in boat building along with conservation and stewardship on a local level.

Kul Kah Han Native Plant Demonstration Garden, John Carroll Park, Chimacum

For Permanent, Self-Guided Educational Signage : The volunteers at this garden have worked hard over the years to create a native plant garden for this public park. They will create self-guiding ecosystem I.D signs and laminated metal plant signs, with the plant names as well as descriptions of the plants.

Respectfully submitted,
Shirley Williams, Chair



Miscellaneous Tidbits, Happenings and Items of Interest



—The North Olympic Fruit Club promotes the growing of fruits and nuts. They provide a wide range of useful information in their monthly programs which are offered free to the public. The club meets the first Tuesday of the month at the Tri-Area Community Center at 7 pm.



—The Olympic Peninsula Mycological Society is a group devoted to the knowledge of mushrooms, from harvesting wild species to home cultivation. Different topics are covered each month and programs are free to the public. OPMS covers the entire Olympic Peninsula, and thus meets alternating months at the Tri-Area Community Center and the Gardiner Community Center. Meetings begin at 6:30 pm. **June is Tri-Area**



—The Port Townsend Saturday Farmers Market, located on Tyler St in Uptown Pt Townsend, will be open for the 2012 growing season from Apr-Dec. Market hours are Apr-Oct from 9 am-2 pm and Nov-Dec from 10 am-2 pm.

—The Chimacum Farmers Market, located at The Chimacum Farmstand at 9122 Rhody Dr (the Chimacum 4-way stop), will be open for the 2012 season from May-Oct. Market hours are 10 am-2 pm.

—East Jefferson Bee Keepers are a group of bee enthusiasts that meet to share tips, ideas and experiences both good and bad on the matter of raising bees. Educational programs, to be announced as scheduled are free to the public. EJBees meets the first Wednesday of the month at the Jefferson Co Library at 6 pm.



If you have a misc tidbit, happening or item of interest that you would like posted on the bulletin board, please submit your item to Ali Dyche at alibruce113@yahoo.com by the 20th of the month.

READING ROOM



A couple of months ago I was lucky enough to have stumbled upon the Lone Pine Gardening series at a library book sale, Herb Gardening for WA and OR. In that time I have found on the shelves of our local library, Roses for WA and OR! Even better, at our MG Plant Sale, I found three more gems Annuals for WA and OR, Perennials for WA and OR and Trees and Shrubs for WA and OR which I quickly added to my personal library. Do you see a pattern here?

These books are wonderful! They focus on specific plants that will thrive in our area. These books help guide you in choosing your plantings with information on color, height, companions and more!

I love how each book offers essential information specific for the book's topic. For example, Trees and Shrubs provides information on preventing pests and diseases, pruning and propagation of them, Perennials touches on light and soil needs, blooming periods etc. Again, can you see this fantastic pattern that's emerging?

For great resources in some of our region's plants, look into the Lone Pine Gardening series.

Submitted by: Ali Dyche

Y&G Update

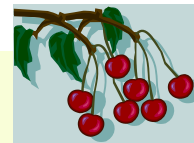
Several of us met on May 21, to keep improving on Y&G 2013. We have come up with a few new ideas and are hoping to develop them more as time goes on.

Everyone's input is welcomed and all are invited to the monthly planning meetings held on the third Monday of each month in the Madrona room at 10:30 am. This month it will be on June 18. If you are unable to attend and have ideas or questions, please feel free to contact Ali Dyche alibruce113@yahoo.com and I will bring them to share at the meeting. I thank you for your help in putting together our wonderful Lecture Series!



Submitted by: Ali Dyche; Y&G Chair

Western Cascade Fruit Society's Cherry Trial



Western Cascade Fruit Society (WCFS) members are conducting a 5-year Cherry Trial throughout the Puget Sound region. This research project is truly one-of-a kind. The trial began in 2010. The majority of WCFS members are backyard growers and hobby orchardists. The purpose of this trial is to determine if sweet cherries can be grown successfully on these new rootstocks by homeowners in our area. These cherries should be delicious, of high brix, with less cracking and grown on shorter more manageable trees.

Members are growing four dwarf and semi-dwarf cherry rootstocks paired with six cultivars. The rootstocks are Gisela 3, Gisela 5, Krymsk 6 and a new hybrid interstem. Gisela 3 and the hybrid interstem rootstocks are not at present being used commercially in the United States at this time. Gisela 5, though, is a well-known cherry rootstock. Krymsk 5 rootstock is in somewhat limited commercial use. The more dwarfing Krymsk 6 in this trial isn't as popular. Six sweet cherry cultivars are being trialed. The trial will test twenty-four new rootstock/cultivar trees. Trial participants may each grow four trees. These cultivars all cross pollinate.

The research materials originated in California, New York, Michigan, Washington and Oregon. One particular initial rootstock was difficult to obtain. Though originally developed and grown in California, the last 5,000 of these rootstocks were shipped to a grower in Yakima intended for a large single trial. A trip was made to Yakima and material was dug up and brought here for our trial. Unfortunately, it was determined after being grafted, that all the Yakima material was virus infected, therefore eliminating it early on.

One of the most troublesome problems we dealt with was some rootstock material was very young and thin, almost impossible to graft. It would have been advantageous to grow out that material for another year, delaying the entire project. We worked as best we could. Cherries are notoriously difficult to graft. They're usually grown by bud grafting in the late spring or summer. Luckily, our grafters were selected from the best in the organization. We realized we could lose trees because of the thinness of the material and we did. Slugs were another problem but were more easily dealt with.

Friends and participating chapter members volunteered. The trial trees were finally grafted, sorted, potted, labeled and cared for from early spring of 2010 until they were ready to be distributed in October 2010. All trees were given metal identification tags. Participants will only learn which cultivars they're growing at the trial's end. Of 250 trees at the start, we were able to distribute only 120.



Western Cascade Fruit Society's Cherry Trial Cont.



Trial participants are required to follow planting and maintenance instructions, keep records, take photos, file reports and of course, taste the fruit. The majority of the cherry trees bloomed this spring, a very good sign. Keep in mind that these trees were only grafted in 2010. Many will have fruit for the first time this summer. The institutions that developed these cultivars bred these cherries for firmness, high sugar content with superior qualities and excellent crack resistance. The cherry colors run from very dark deep red to orange red to blush. The trees are showing signs of being productive and vigorous. These cultivars are under license or patented. Fruit from the trial trees will of course be enjoyed by growers except for some samples and of course, one or two for the birds.



Submitted by: Judi Stewart

*Dr Roger Eichman
maintained the WCFS
cherry trial trees in
his greenhouse.*



BIOCHAR TALK AT THE QUIMPER GRANGE

On Monday, June 4, Quimper Grange will present a talk by scientist, gardener and ecologist, Norm Baker on biochar, the non-polluting method of changing biomass to beneficial energy. He will give an introduction to making biochar, how to use it in the garden, how it operates to improve plant productivity, how it accomplishes many environmental benefits and how it will contribute to our future sustainability.

According to Baker, biochar, properly made, is sustainable, nonpolluting, healthy, efficient and holds enormous potential, which will also impact many different areas of our economy and culture. It will be especially important in renewable energy, climate change, agricultural soils and will produce economic development and jobs. He will bring demonstrations, examples and a handout.

Norm Baker has a BS in Zoology and Ecology, MS in Entomology and Ecology, PhD in Entomology, Protein Chemistry and Arthropod Morphology. He is a lifelong practicing environmentalist, gardener, and do-it-yourselfer. He is a former owner of Northstar Nurseries and is now active in the North Olympic Group of Sierra Club.

The program starts at 7:30 pm and is preceded by a potluck dessert/fingerfood social half-hour from 7pm to 7:30pm. Suggested donation: \$5-\$10. For further information contact: Charlotte Goldman at 385-3455

Sherlock in the Garden

In the new Sherlock Holmes series on PBS, Sherlock uses 21st Century technology to solve complex mysteries. He and his partner Dr. Watson spend as much time on the computer, texting and delving into databases to find solutions as they spend in the field. Sherlock has nothing on Master Gardeners.

A computer, databases from Extension departments at the University of California and University of Minnesota, a magnifying glass and catching a criminal in action, helped me solve a persistent crime against my roses. A little worm has visited my roses, chewing and skeletonizing rose leaves over many years that I've grown roses on the Kitsap and Olympic Peninsulas. This worm chews away the leaf except for the veins, leaving little brown spots over the leaf. Eventually the leaves may be totally eaten, leaving a leaf skeleton. This happened to a beautiful climbing rose I planted last year. I left for a week of camping last summer and returned to find the rose nearly defoliated. I thought I'd lost it to this demon worm, but with nature's forgiveness and perhaps some karma, the rose has come back lush and healthy this spring.

But the worm is back as well. I noticed a few leaves with those pesky holes this last week. However, with the Master Gardener course of 2012 nearly completed, I now have the tools to identify this little scamp and determine the treatment options.

Armed with my magnifying glass I turned a leaf cluster over and found the culprit. I brought the leaf inside and began my search to identify this guy. With the worm only about .25 of an inch, a magnifying glass was essential. The University of Minnesota's Extension site has a great database Insect Pests of Roses. (<http://www.extension.umn.edu/distribution/horticulture/dg6953.html>) I went to the section called Defoliators, Leaf Feeders and found the worm. It is the larvae stage of the Sawfly, also known by the lovely name *Roseslug* (Great, ANOTHER kind of slug.) There are 3 species of *Roseslug*. Two species, *Roseslug*, *Endelomyia aethiops* and Curled Rose Sawfly, *Allantus cinctus* have only one cycle of metamorphosis each spring. Once they mature they are gone for the season (usually May through June). The third species of Sawfly, Bristly roseslug, *Cladius difformis*, has several generations throughout the summer. Bummer. So with a sinking feeling, I needed to figure out which species was chomping my rose leaves.

Oregon State University website was my next stop. Their page Pacific Northwest Nursery IPM (<http://oregonstate.edu/dept/nurspest/roseslug.htm>) had further information to help me close in on identification.



Photo from OSU website



Photo from <http://nathistoc.bio.uci.edu/hymenopt/Sawfly.htm>

Sherlock in the Garden Cont.

This site had a link to UC Irvine's site, (<http://nathistoc.bio.uci.edu/hymenopt/Sawfly.htm>) An entire page is dedicated to the Bristly Roseslug Sawfly. Yup, there it was, a probable match to the guy munching on the leaf on my kitchen counter. Both are bristly, both have three pairs of thoracic legs. Darn.

With some measure of confidence that I had identified the culprit, I learned that hand picking or a strong squirt of water is often sufficient to keep ahead of the Bristly Roseslug. The key phrase is that "with diligence", it can be kept under control. So, I've picked off the chewed leaves (I caught it early enough that this was possible) and I've been out every morning, checking and squirting or squishing those worms. Squirting off these larvae in the evening could cause further issues with mildew. Should the sawfly larvae gain the upper hand (or my "diligence" flounder) I am ready with insecticidal soap, my next line of defense. Don't try Bt; it doesn't work on Sawfly larvae.

I can look forward squishing and squirting worms through several generations this summer. But I have a sense of satisfaction that, like modern Sherlock, the sleuthing, the technology tools, and the knowledgeable hunches can lead to an end of the case.

Submitted by: Ann H. Raymond

Habitat for Humanity Garden

On a lovely sunny April Saturday, landscaping was installed at Habitat for Humanity home number four on Eddy Street, Port Townsend. A variety of flowers, shrubs and trees were provided by generous donations from local gardeners Dana Pernell and Penny Welch, and Four Corners Nursery, in addition to plants purchased with funds from Habitat for Humanity and Port Townsend Garden Club. A handsome Balsam Fir was also donated by [Bob Schultz](#). We did our best to fulfill the dreams of the new homeowner, Maria Gomez. The MG landscape committee, Nancy Villagran, Dana Pernell and Karl Meyer, were vigorously aided by the PT High School basketball team volunteers. Spring has certainly come to Eddy Street. As I write this, house number five is going up...more to come.



Submitted by: Nancy Villagran; Habitat for Humanity Garden Program

Wild Chervil (*Anthriscus sylvestris*; syn. *Chaerophyllum sylvestre*) Also known as bur chervil, cow parsley and keck and is **CLASSIFIED AS A NOXIOUS WEED IN JEFFERSON CO AND THE COUNTY IS DEBATING SPRAYING IN CERTAIN AREAS TO REMOVE IT!**



Description: Wild chervil is a biennial or short-lived perennial plant of the parsley family. Seedlings develop into a rosette during the first year. In the second year, the plants produce hollow flower stems, usually 3-4 feet tall (can reach 6 feet). The stems are branched and covered in soft hairs, particularly near the base. The leaves are alternate, nearly hairless, and divided into smaller, fernlike leaflets. The base of each leaf surrounds the stem. Tiny, white flowers with 5 notched petals bloom from late May to early July of the second year. Individual flower stems form a small cluster. The flowers of several of these small umbels together form a larger umbel resembling an umbrella. The thick taproot of wild chervil has lateral buds at the top of the root which allow for re-sprouting. The taproot of mature plants may be up to 6 feet deep.

Look-alikes: There are several other weedy plants with white umbels and lacy leaves. Wild carrot (*Daucus carota*), or Queen Anne's lace, is a widespread grassland weed that resembles wild chervil. Queen Anne's lace has unique curved bracts (modified leaves) at the base of each umbel and a small purple flower at the center of the umbel. Japanese and spreading hedge parsley (*Torilis japonica* and *arvensis*) and poison hemlock (*Conium maculatum*) are all new invaders to Wisconsin and should be reported and controlled. The leaves of the hedge parsleys are sparse and have 3 toothed leaflets; unlike the more fernlike leaves of wild chervil. Poison hemlock grows taller, up to 9.5 feet, and has stems covered with purple spots and vertical ridges.

Impacts & Habitat: The current known range includes the northeast (Maine to Virginia), the Pacific Northwest and the northern Midwest (Michigan, Minnesota and Wisconsin). Wild chervil will grow in a variety of soil types, but prefers rich, moist soils. It may be found along roadsides, open woods, pastures and disturbed areas. Spreading can be caused by the movement of seeds in water, by birds and by mowing equipment; as well as by lateral budding at the top of the root. This plant competes with others for light, space and nutrients and may shade out surrounding vegetation.

Control: Wild chervil is difficult to control because of its extremely deep taproot and its resistance to herbicides. Pulling up the flower stalks without removing the entire taproot can lead to re-sprouting. Mowing may deplete root reserves if done repeatedly before the plant forms seed. Herbicide application (clopyralid and dicamba) shortly before blooming and one month after a pre-bloom cutting has shown some success. In recent trials, metsulfuron methyl has killed chervil plants three weeks after application; 2,4-D has been ineffective.

If you would like more information on Wild Chervil in Jefferson Co or how to help control it and/or other types of noxious weeds in Jefferson Co, please contact Eve Dixon, our County Noxious Weed Coordinator. She can be reached at 360-379-5610. For a list of noxious weeds in Jefferson Co, please visit www.co.jefferson.wa.us/WeedBoard/FactSheets.asp

Submitted by: Ali Dyche

JCMGF May 2012 Board Meeting Minutes



-Call to order at 3:02 pm

-Apr minutes approved at the Foundation meeting

-Treasurer's Report – Phil Meany presented the monthly report and it consisted of:

Accounts total

Training and Plant Sale costs shown

Laptop purchased at \$1,003.42 and envelopes at \$90 for 1000

Copies \$272.20 and it was pointed out that copies made at WSU are more expensive than using one of the local print shops.

IRS filing done

-Documents/Charter – Mark Clark noted that JCMGF is the only Foundation that has a Chair rather than a President. Sarah Fairbank made it known that Dr Lewis has had the locks changed on the building and wants to keep the amount of keys to an absolute minimum. Dr Lewis wants the MG Coordinator to hold the key rather than the Chair or other Foundation member. Sarah will make sure the key is readily available to those who need it for MG events. These were items stated in the JCMGF Handbook that is on the table for approval.

Mark Clark made a motion that the by-laws and volunteer handbook, dated 5/10/12 be approved by the board for distribution to the general membership with the intention that the documents be voted upon for implementation at the 5/10/12 Foundation meeting. Mike McFadden seconded the motion. Motion passed unanimously after below mentioned amendment was implemented.

The part about the key to the WSU office being held by the Chair was pointed out.

Mark amended his motion to the volunteer handbook to say that the key to the WSU office will be available from the MG Program Coordinator.

Linda Pfafman seconded the amendment. The amended motion passed unanimously.

JCMGF has signed a Charter as a Chapter of the Master Gardener Foundation of Washington State, the first county Foundation in the state to sign such a charter.

-Grants/Scholarships – Shirley Williams submitted the report on the spring applicants for grants and scholarships which included 12 grant applications and 1 scholarship application. It was recommended by the grants committee that 4 of 12 not be funded as they did not fit the requirements of the grant and the board agreed. The total of the 8 recommended grants and scholarship is \$5899.

The Grants Committee feels that from now on, funding for the Demonstration Organic Garden and Compost Project for JCMGF located at Sunfield should come from the annual budget as it is an ongoing JCMGF project, rather than through grant funding.

Concerns arose regarding Sunfield's Permaculture Garden application and the results of the past three projects funded by the JCMGF with the main concern being that we cannot get receipts from them for records as required by our grant policy as well as more follow up information from the last three grants awarded to them.

Phil Meany made a motion that the board accept all recommendations from the Grant Committee with the exception of the Sunfield Permaculture Demonstration Garden. Linda Pfafman seconded the motion. It passed unanimously.

Action Item-The Grants Committee will meet to come up with some better plan management strategies for following up with the awarded applicants and their projects.

Committee Reports- Roger McPherson reminds all committee chairs to please submit any reports to both the Chair and Newsletter editor.

Membership Report- This was tabled as Pat Anoitzebehere was ill.

Nominating Committee- Hugh Musser will head the committee. Mary Pat Griswold and one other person (not yet found) will locate nominees for the 2013 board.

MG Coordinator's Report- Sarah Fairbank informed the board that Webinars for MG Program Coordinators take place monthly. She thinks these would be a good source for Advanced Education options and/or monthly meetings. Tonie Fitzgerald will be here on 5/18/12 to speak with Jefferson and Clallam Co Program Coordinators and extension directors to see about possible joint programs such as training to reduce the costs out of both counties.

Plant Clinic Report- Sarah Fairbank brought a sample of the design for the new Plant Clinic banners. There are three 24" x 32" vinyl banners, one for each clinic. Also, WSU is currently working on what references can be used at Plant Clinics. Sarah says that common sense when offering plant advice is best. Mike McFadden said that there are new Noxious Weed Board notices that can be distributed at Plant Clinics.

Rain Gardens- Four MGs have been trained as Rain Garden mentors. Jill Bacchieri, Ann Klosterman, Erica Iseminger and Susan Yadon are taking training course. Jefferson and Clallam MGs train in this together.

Tri-Area Community Center Contract- Roger McPherson reported that a new rental contract was signed with the Tri-Area Comm Center for our monthly Foundation meetings. The building has been rented for the months of May, June, Sept, Oct, Nov 2012 and Jan 2013 at which time the 2013 board will address contract renewal. It was not rented for July, Aug and Dec 2012 as we have decided not to schedule a July Foundation meeting due to low attendance in the past and Aug and Dec are our annual picnic and holiday party which are held elsewhere.

Field Trips- Sharon Commander is arranging two field trips, one to Bainbridge Island for the Conservancy Tour and one to Indian Island. Both field trips have been approved by WSU for Advanced Ed hours.

2014 MG State Conference- If interested, it's time for the state MG Foundations to apply for hosting the 2014 State Conference. It takes planning, application writing and lots of volunteer time. JCMGF has successfully hosted this weekend long event twice before. Currently, the board can find no one interested in spear-heading the project. While we have no volunteers stepping forward to host another conference, this is a timely reminder that MGs should be planning to attend this year's conference in Tri-Cities.

Island County MG Speaker Program- Island Co MGF is hoping to create a shared speaker list with Jefferson, Clallam and Kitsap Co Master Gardeners. This would create a pool of topics and speakers for the Foundations to select from for their programs. Marian Meany passed her list of MG Speaker Bureau speakers and topics to Roger who will respond positively to Island County with a list of potential topics our speakers would be willing to cover.

JCMGF Laptop- A new Hewlett-Packard laptop was purchased in April by the Foundation to be used for such tasks as the monthly newsletter, foundation programs, Y&G and other needs.

Annual Picnic- We have tentatively scheduled the annual picnic, held in lieu of our Aug Foundation meeting, for Sat, Aug 18 at Mike and Joy McFadden's on Lake Leland.

Adjourned- We unanimously agreed to adjourn at 4:50 pm.

Submitted by: Ali Dyche; Acting Secretary

JCMGF May 2012 Foundation Meeting Minutes



-JCMGF's very own Christina Lacie, took Organic Vegetable Gardening classes in Kitsap Co. The Foundation sponsored her to take these classes and to come back and share the knowledge she learned there.

Of the 32 hours spent absorbing information, she wisely decided to focus on a portion of it, instead of trying to cram it all into just one. Thank you for that Christina! The portion she touched on was companion planting and crop rotation.

-Phil Meany gave the treasurer's report. Please see in full on the previous page.

-Shirley Williams mentioned that the Grants/Scholarship Committee had come up with their choices and the board had approved them and a full report was coming. For the full report, please see page 7.

-Ali Dyche reminded everyone that Y&G Planning Meetings are held the third Monday of every month at 10:30 am in the Madrona Room at WSU. Everyone is welcome!

-Kris Burns asked for assistance in putting up SGT posters around the county and for a few more warm bodies for SGT day.

-Sarah Fairbank invited everyone to the 2012 MG Trainee Graduation Potluck on May 30th at noon in the Cotton Bldg (the old PT Police Station).

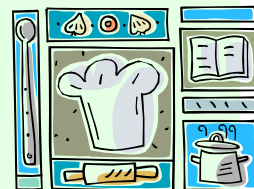
-Barbara Schultz reminded everyone about our upcoming plant sale and asked for as many volunteers as possible to help with the set up and clean up.

-Virginia Crandall, Superintendant of the Horticulture Bldg for the Jefferson Co Fair Assn, explained a bit about how Master Gardener's can help out in either the Floral Dept or the Agricultural Dept during the Fair. Volunteers are needed to help with taking entries, greeting, and steering people towards the displays. MGs earn volunteer hours for this and are also encouraged to enter items into the fair to be judged in by the Danish method. If you have more questions or would like to volunteer, please contact either Virginia Crandall at 379-8319 or Ali Dyche at 732-0433.

Submitted by: Ali Dyche; Acting Secretary

KITCHEN KORNER

Fruit Salad with Yogurt and Honey Dressing



A fruit salad can be made many ways with many different types of fruit. Local and seasonal is always the best tasting and will offer a nice variety. I find that the secret to a truly exceptional fruit salad is the dressing. My favorite is the following.

Two bananas, sliced
One apple, chopped
One pear, chopped
Half pint strawberries, sliced
Half pint blueberries
Half pint raspberries
16 oz plain Greek yogurt
1 cup honey

Chop and slice fruit and place into a bowl. Add blueberries and raspberries. In another bowl, blend yogurt and honey until smooth. Mix into the fruit, chill and enjoy at anytime of the day. Serve this as an elegant, low-fat dessert, indulge in it for breakfast or eat it as a mid-afternoon snack!

Find out what your favorite fruit combinations are and enjoy!!

Submitted by: Ali Dyche

Schedule of Events

June 2012

June 7– Board mtg 3 pm WSU/Madrone room

June 9– SGT Pre-Tour; 9:30— ?; meet at the Transit Park and Ride (next to Safeway) to car-pool

June 14– Foundation meeting 3-5 pm, Tri-Area Comm. Center

June 16– Secret Garden Tour

June 18– Yard and Garden Committee mtg; Madrona room; 10:30 am

For all other items, activities and events, please see Misc Items on page 6

MG Board Meeting – First Thurs of each month; 3:00 pm, WSU/Madrona room

MG General Foundation Meeting – Second Thurs of each month, 3-5pm, Tri-Area Comm. Center.

WSU Plant Clinic–Every Tue; 1-4 pm

Co-op Plant Clinic– Every Fri; 2:30-5 pm

Chimacum Plant Clinic–Every 2nd & 4th Sun, 10-2

Y&G Planning Mtg–Every third Mon; 10:30 am

Do you have an item for the Calendar/ Schedule of Events? Please submit to the editor at alibruce113@yahoo.com, or call Ali at **360-732-0433**. Committee chairs, please submit dates, times and locations of your meetings.
Newsletter Deadline: 20th of the month.

Sun	Mon	Tue	Wed	Thu	Fri	Sat
					1 <i>Co-op Plant Clinic</i> 2:30 - 5 pm	2
3	4	5 <i>WSU Plant Clinic 1- 4 pm</i>	6	7 <i>Board Mtg</i> 3 - 5 pm	8 <i>Co-op Plant Clinic</i> 2:30 - 5 pm	9 <i>SGT Pre-Tour</i> 9:30 - ?
10 <i>Chimacum Plant Clinic @ Chimacum Farmers Market 10-2</i>	11	12 <i>WSU Plant Clinic 1- 4 pm</i>	13	14 <i>Foundation Mtg 3 - 5pm</i>	15 <i>Co-op Plant Clinic</i> 2:30 - 5 pm	16 <i>Secret Garden Tour</i> 10 - 4
17 <i>Father's Day</i>	18 <i>Y&G Planning Mtg 10:30 am</i>	19 <i>WSU Plant Clinic 1- 4 pm</i>	20	21	22 <i>Co-op Plant Clinic</i> 2:30 - 5 pm	23
24 <i>Chimacum Plant Clinic @ Chimacum Farmers Market 10-2</i>	25	26 <i>WSU Plant Clinic 1- 4 pm</i>	27	28	29 <i>Co-op Plant Clinic</i> 2:30 - 5 pm	30 <i>B.I. Conservancy Garden Tour</i> 10 - 4



WSU Jefferson County Learning Center
201 West Patison
Port Hadlock WA 98339



Master Gardener Foundation

We're On The Web!
<http://mg.jefferson.wsu.edu/>