



MASTER GARDENERS JEFFERSON COUNTY

© Cynthia Blmore 2001

NEWSLETTER

July 2010

Secret Garden Tour 2010... Sunshine and Success

Inside this issue:

<i>July Foundation Meeting, This and that</i>	2
<i>Chair'sEye View, MG Garden Open details</i>	3
<i>MG Programs Updates</i>	4
<i>JCMGF Board Meeting Minutes</i>	5-6
<i>JCMG Foundation Meeting Minutes</i>	7
<i>Grants Awarded</i>	8-9
<i>Calendar</i>	10

The sun blessed us with its appearance and we had some delighted tourists through our eight gardens. Umatilla Cottages looked great and was well received. Many excellent comments were heard in all the gardens, each one so unique and sparkling in the sunshine. According to ticket sales person, Erica Iseminger, we sold 481 tickets, many on the day of the tour, for a total of \$7,627. Expenses came in at \$811.12, almost within budget.

Sincere thanks go to my wonderful supportive subcommittee chairs Hugh Musser, Betty Petrie, Pat Aniotzbehere, Lorna Ross, Mary Pat Griswold, and Karl Meyer, and the garden coordinators, Susan Ambrosius, Joan Wilder, Sarah Fairbank, Janet Mizuguchi, Cris Wilson, Julia Blakeney-Smith, Dicksy Scott and Shirley Williams, and the co-coordinators Ali Dyche, Caroline McNulty, Laurel Solana, Valerie Parker, Patricia Moreland, Diane Threlkeld, Sharon Garrels, Cheri VanHoover, and last but certainly not least, all of the docents.

Special appreciation goes to Diane Threlkeld and Cathy Carroll for the work in advertising and publicity, the most challenging task for the chairperson to undertake and they made it so easy. And to Kris Burns for holding my hand.



The final paperwork is underway to get suggestions in the binder for the next tour, with comments on what we like about the Clallam County, as well as clarification to the tasks required for the chairperson and each subcommittee, and the few sites that were suggested to us as available for SGT next year or going forward.



The position for chairperson of the SGT is open. I cannot do it next year. But, I will be there to work on committees and help out as much as I can.

Thanks again to you all. It was a delightful experience and I enjoyed working and laughing with you all.
-Judith Johnson



JCMGF July Foundation Meeting



We will be having a "Plant Exchange and Snack Potluck" for the July 8 Foundation meeting program. It will be at the regular time/place of 3:00 pm at WSU in the Spruce Room. This will be a real "Happy Hour" for real gardeners (or us "wannabes"). Everyone who came to last year's exchange agreed that it proved to be lots of fun, and a lot of great plants found new homes.

Everyone should bring two of their favorite plants. It may not seem like the best time of year for digging up plants, but we are Master Gardeners, after all, and we can usually prod any plant into its full potential.

They can be outdoor or indoor plants -- perennials, shrubs, bulbs, fruits, vegetables, whatever you think one of your master gardener friends would like. If you don't have anything suitable or plentiful in your garden, or don't have the time, or the weather doesn't favor digging something up, then you may feel free to purchase plants to bring.

Here's how it will work:

- * We will all draw numbers.
- * Before we begin choosing plants, we will go around the room, and each person will briefly talk about what they brought - telling the name, cultivation tips, growing requirements, etc., and/or why they like the plant.
- * Then we go around, with #1 choosing a plant first, #2 next, etc. When everyone has chosen one plant, we'll start over and go around again, in reverse order, starting with the highest number.

Please bring a **snack or appetizer** to share for the "snack potluck", as well as your plants. *Submitted by Mary Pat Griswold*

MG Conference Companion?



WANTED: A traveling companion and roommate for the MG State Advanced Education Conference to be held in Vancouver, WA from Thursday, Sept 23rd to Saturday, Sept 25th. Contact Kathi Boyker 765-4717 or kboyker@mindspring.com

Lost Coffee Mug

LOST: During May's Plant Sale. A tall insulated coffee mug with "Jefferson Healthcare" logo. If you know of the mug whereabouts, please call Bernie Stechman 379-9728



Extension Staff

Phone: (360) 379-5610

Katherine Baril, ext. 202
WSU Extension Chair
Master Gardener Program Coordinator

Sally Chapin, ext. 200
Receptionist/Office Assistant

JCMG Foundation Executive Board Chairperson

Suzanne Graber ((360) 437-8081
suzanneeg@msn.com

Co-Chairperson

Diane Threlkeld (360) 379-1172
diane_threlkeld@yahoo.com

Secretary

Barbara Smith (360) 460-9121
dbtsmith@yahoo.com

Treasurer

Sharon Commander (360) 437-2486
cmdrs@cablespeed.com

Board Members:

Judith Johnson (360) 437-8049
judymj@attglobal.net

Susan McMahan (360) 437-2010
susanmcm@cablespeed.com

Hugh Musser (360) 390-4567
hughmusser@cablespeed.com

Betty Petrie (360) 379-3334
bbpetrie@cablespeed.com

Shirley Williams (360) 385-2019
gswilli@earthlink.net

MG Foundation of WA State:

State Rep: Mark Clark
(360) 379-4845 sonomarko@yahoo.com

Vice-President, Peninsula Region:
Mike McFadden (360) 765-3312
lelandlakehouse@wildblue.net

M.G. NEWSLETTER

Do you have an idea for an article in the newsletter? Book review? Do you chair a committee? Please submit all items, or events that should be included, to Kris Burns via e-mail at burns_cabin@olympen.com, or call Kris at 360-765-4224, by the 25th of the month. Thank you!

Chair's Eye View of the (Master) Garden



Well, weren't we lucky. Only a few truly sunny days in June and one of them beamed on our Secret Garden Tour. I was a docent in Garden 8 in the afternoon and spoke with many visitors who had already been to the other gardens. Everyone really enjoyed the garden selection and remarked on how interesting and beautiful the gardens appeared. Congratulations and thanks to every volunteer who made the SGT another resounding success! Remember, please, to record all those hours you worked on any aspect of the Tour.

Thank you, Leon and Martina Richard, for allowing Master Gardeners to visit your beautiful garden in May. Thank you, Janet Polley, for opening your garden to Master Gardeners in June.

Happy Gardening!
Suzanne Graber, Chair

Special July MG Garden Open...Double the Beauty

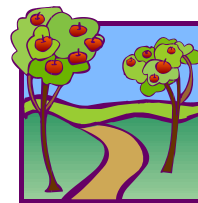
On **Thursday, July 15th from 10 am to 2 pm** there will be two MG gardens open for your enjoyment. Both are located on the Toandos Peninsula, 20 minutes south of Hwy 104 on Hood Canal.

The first is Greg and Lesley Barron's garden on Thorndyke Road. Lesley is an intern from the 2010 training program. She describes her garden as "magical for my husband, Greg. He has gardened in this yard since the 1970's when he was just a teenager." Lesley goes on to say "this is my third year of gardening on the property and I have made a positive impact with special little touches but nothing too expansive. I have been working on a shade garden and a woodland path that will link the main yard to the orchard."

The second garden is Chuck Thrasher and Kathi Boyker's garden located on Coyle Road. Kathi writes, "welcome to our home and garden. Chuck and I were originally attracted to the property because of its natural beauty and views overlooking Dabob Bay and the Olympic Mountains. We began construction on our home 10 years ago and two years later we planted our first two gardens --- a perennial garden and a rose arbor. The following year Chuck built the first of three ponds and I added the surrounding gardens. Are we finished yet? Who knows! Maybe you will have a suggestion or two after touring the garden!"

Both gardens are within one mile of each other. Driving directions and parking details will be sent out on the ListServ a few days before the event.

Submitted by Kathi Boyker



Coming up...summer MG Garden Open days continue:

August 28th - Joan Wilder, Kala Point

September - Cheri Van Hoover, Port Hadlock

Janet Polley's Spectacular Garden



On a lovely sunny June day, MG Janet Polley opened her Kala Point garden for us to visit. I have never in my life heard so many "Oooh's and Ahhh's". What a very special treat. Thank you, Janet, for sharing your fabulous garden oasis for a few hours! Happy retirement too.

~Kris Burns, Newsletter



Report Your MG Volunteer Hours!

Make it a habit. <http://mg.jefferson.wsu.edu/> click on 'report volunteer hours'

Every time you volunteer your time at a Master Gardener function, attend a MG Meeting, or Continuing Education, go right home to your computer and record your hours, at the WSU Web site that you have bookmarked, while it's fresh in your mind.

It's so easy. For those of you who don't have computer access, write down your time and send it or drop it by the extension office to the attention of the membership team. We will input the data for you.

Have you reported the time you spent working at the Secret Garden Tour this year?

WSU's expectation is that hours are reported on a monthly basis.

We are now up to 60% reporting their hours, so thank you for your response to our last email plea. There are 120 active members and 73 have reported hours. We are close to 4,000 hours reported so far this year. Those reporting more than 200 hours in 2010: Sarah Fairbank, Suzanne Graber, and Marcia Schwendiman.

Thanks so much! Remember, this is important for WSU to see the work we do so that they can continue financial support of our programs. *Submitted by Kathy Ryan and Pat Aniotzbehere, your membership team*

Mullein Steroids?

No, just a very happy *Verbascum olympicum*; Olympic mullein or Greek mullein. It is a spectacular plant with leaves 18+ " long and 6 + " wide. The flowers are sunshine yellow. It is stopping passersby to gawk. Apparently it will self seed, hmmm, that's a lot of mullein.

Submitted by Sarah Fairbank



Plant Walks...



Plant walkers are taking a summer hiatus during the months of July and August. Plant walks will start again in September. The date/meeting location will be in the September newsletter. *Sarah Fairbank*

Master Gardener Park Update

The big push is now on to make the Park into a really big show for the dedication this summer. Much has been accomplished by several really hard workers and I surely do appreciate everyone who shows up. Staking and tying has been done to all the plants that needed it. We continue to fight weeds. The clematis and forsythia and rockrose are pruned up, for the most part, and looking better. We are now concentrating on irrigation enhancement, planting in-fillers, removing some more invasive succulents, removing the existing bark (using it as a mulch around shrubs) and widening the pathways for the installation of gravel. Also to be addressed is the flooding that occurs during each decent rainfall as water comes down from the Cup and runs right into the Park, floating away the bark and bringing in weed seeds. Basically we think we just need to add more gravel and build up a berm on the west side.



We'll be at the Park most mornings, except Wednesdays and weekends. If you still need to work off some winter weight, we surely could use you to help move the gravel. Bring a flat shovel and a wheelbarrow and a smile. If shoveling and moving gravel doesn't appeal to you, there are always plants to deadhead (Shasta daisies and poker plants, dahlias) and prune back, like the *Helianthemums* (sunroses).

Come join us. Judith Johnson

JCMGF June Board Meeting

JEFFERSON COUNTY MASTER GARDENER FOUNDATION MINUTES OF THE JUNE 3, 2010 BOARD MEETING

Members Present: Suzanne Graber, Chair; Diane Threlkeld, Co-Chair; Sharon Commander, Treasurer; Board Members – Judy Johnson, Susan McMahon, Hugh Musser; Barbara Smith, Secretary; Mike McFadden Peninsula Region Vice President State Master Gardener Foundation Board; Kathy Ryan and Pat Aniotzbehere Membership Committee Chairs

The meeting was called to order at 1:00 pm by Suzanne Graber.

A quorum was present.

Old Business:

Membership: Kathy Ryan advised the Board that there are currently 123 active Master Gardener Foundation members. For 2010, 54% have reported hours. There are two issues to address: reporting volunteer hours by the Foundation members, and the requirement of 35 hours, annually, (10 hours continuing education and 25 volunteer hours) for each member to remain active.

Suzanne talked to the Walla Walla and Yakima Foundations. Both of them have a Master Gardener Coordinator to assist volunteers with reporting hours. This job would fall to Katherine Baril as the WSU extension representative, but that is not possible.

Suzanne complimented Kathy and Pat on the excellent job they do.

Suzanne asked Kathy and Pat to set up a template for the monthly newsletter that will remind members to record their hours.

Suzanne will remind everyone at the Foundation meetings to record their time.

Committee chairs and coordinators can remind volunteers during and at the end of each project.

Board members could call or e-mail members who have not reported hours.

Have a reminder at each Plant Clinic location.

Mailed reminders may be considered at a future date.

There are about 30 members who have not reported 35 hours for 2009. It was noted that some of the members who did not report, were active.

Judy suggested that the Board contact those individuals to find out any areas of interest. Perhaps there should be an honorarium category for members who are no longer report 35 hours but were extremely active in past years. Suzanne asked Kathy to send out a list serve e-mail asking for 2009 hours and explaining how to submit. Individuals can request a leave but only for one year. The Board may consider an extension on an individual basis. Board members wrote down names of inactive members to call and ask them to report any volunteer hours and / or encourage them to become involved in some activity.

Kathy will prepare a list of members who have not reported any hours for 2010. The list will be given to the Board members at the July meeting. The Board will then make phone calls to these individuals to see what help they need.

Mike noted that WSU's funding from the State for Extension is dependent on the number of volunteer hours reported.

Board Vacancy: It was Kathy Ryan's recommendation that Barb Smith complete her intern hours before receiving her "square badge" because her MG hours in Idaho are not recent. The Board agreed and recommended Mike McFadden fill the Board vacancy. The nomination was seconded and passed unanimously.

The minutes of the May 2010 Board and Foundation meetings minutes were approved. Hugh Musser abstained as he was not in attendance.

Treasurer's Report: There is currently a total of \$33,630.31 in the accounts. There were no questions.

Oral Committee Reports

Secret Garden Tour: Judy Johnson reported there is an ad in the Leader and a reporter will be on the pre-tour Saturday. If the article does not appear before the Tour, an overview of the Master Gardeners and a pitch for the plant clinics could be included. Hugh Musser will put up the WSU sign board for the Tour today (6/3). The Port Townsend police will put pedestrian caution signs on Fir Street on the day of the Tour. The poster graphic will be printed on thank you notes to the garden owners. A thank you gift of note cards with their individual garden pictured will be included. Judy requested money for orange vests for the parking volunteers. A motion was made to purchase vests and take the money from general funds. The vests will be useful for other activities. The motion was seconded and approved unanimously. \$50.00 was budgeted. Mike McFadden and Diane Threlkeld will work with Peninsula Daily News contacts to see if we can get a small article prior to the tour. Susan McMahon has new Master Gardener products that may arrive prior to the Foundation meeting and the Tour.

(Continued on page 6)

JCMGF June Board Meeting (Con't)

Grants: Shirley Williams is finishing the final reports from the Fall grants. Reports from some of the Spring grantees will be due in early June, the rest throughout the Summer as they complete their projects. Shirley Williams and Kathi Boyker will prepare a story board on the Grants Program for Jefferson County's submission to the "Search for Success" program at the State Master Gardener Conference. They will report at the July Board meeting.

Yard and Garden: The Port Townsend Community Center will be used in 2011. The committee will revisit other venue possibilities for 2012. Judy mentioned the Quimper Grange as a possibility.

Field Trips: Sharon Commander reported The Far Reaches trip had to be rescheduled. The change will be added to the online calendar. Sharon will ask Vicki Costakis to send a list serve e-mail re the calendar change for the Far Reaches trip.

Publicity: Diane Threlkeld is working on a general Master Gardener flyer. WSU has templates to coordinate external communications. The only requirements are the WSU logo and the disclaimer. Diane will bring copies of the templates to the July Board meeting. This committee could use additional volunteers.

State Master Gardener Foundation: Mike McFadden reported there is a meeting 6/4 that he is attending. There is a coordinator meeting in Bremerton 6/15. Suzanne asked Mike to continue his research on the retention abilities of other counties. The current limits and priorities of approved activities for volunteers will be a topic of a future Board meeting. The approved motion from last month's meeting to reimburse a specified number of volunteers who attend the State Foundation Advanced Training Conference was rescinded unanimously. In its place a motion was made as follows: The official representative from the Jefferson County Master Gardener Foundation will receive full reimbursement. (Full reimbursement will be defined to include registration fees and lodging.) Additional members approved by the Board to act in an official capacity will have registration fees, only, reimbursed. The motion was seconded and passed unanimously.

Memorandum of Understanding: Suzanne reported that our organization is not in compliance with WSU because Appendix A expired December 2009. The bylaws and procedures committee are working on this issue. Larry Jones asked if insurance language should be included in this appendix. Shirley Williams will report on the MOU at the July Board meeting.

Dedication of Master Gardener Garden: The dedication in honor of Mary Robson will occur sometime in August. Mary has requested that we do not include local public officials such as the mayor and commissioners. Mike McFadden suggested we invite Tonie Fitzgerald, the State Master Gardener Program Leader. He will check with Tonie for a date and coordinate with Judy Johnson. Diane Threlkeld, Shirley Williams, and Valerie Parker will work on the details and the publicity.

Celebration of Volunteers party: By email request to vote, Diane Threlkeld, Judy Johnson and Betty Petrie voted in favor of the party; Hugh Musser, who was on vacation, voted by telephone in favor of the party. By email, Sharon Commander voted against the motion. Shirley Williams and Susan McMahan did not vote. There was a vacant Board position at the time of the vote. A majority of Board members therefore voted to support the party. Suzanne is trying for June 26 because it is a closer date to the Secret Garden Tour. Alternate date is July 11.

New Business

Dana Purnell would like Master Gardener volunteer hours for working in the horticultural division of the Jefferson County Fair. A motion was made to approve volunteer hours for a Master Gardener who works in the Horticultural Building during the Jefferson County Fair. The motion was seconded and approved unanimously.

Mary Pat Griswold has asked to be replaced as the committee chair of the Program Committee as of September 2010. This discussion was tabled until the July Board meeting.

The meeting was adjourned at 3:30pm.

Submitted by Barb Smith, Secretary

JCMG Foundation General Meeting

JEFFERSON COUNTY MASTER GARDENER FOUNDATION GENERAL MEETING JUNE 10, 2010

Presentation:

"Experiment in Gardening: Reduce Water Summer 2009" was presented by Mary Robson, horticulturist and author. Mary's garden of 4 year old plants was put on a no water regimen from May 2009. Her slides reflected the good, the bad, the ugly, and a few interventions. As always, Mary's knowledge and insights were appreciated by everyone who was fortunate to attend. Suzanne Graber reminded everyone that the Master Gardener Park will be dedicated in Mary Robson's name in August. She also thanked Mary Pat Griswold, Chairman of the Program Committee, for the excellent monthly programs this year.

Meeting:

The meeting was called to order at approximately 4:15 p.m.

Suzanne Graber, Chairman, reported on the June 3rd Board meeting.

Based on the Membership Committee's recommendation, Barbara Smith will be required to complete her 100 intern hours before receiving her square badge. It was determined that her past experience was not current.

Mike McFadden was nominated and approved to fill the existing Board vacancy.

Suzanne thanked Cathy Carroll and Diane Threlkeld for a wonderful job getting Secret Garden articles in the newspaper.

Someone added that there was a link from the MSN web page to an article on Secret Garden. The Seattle Post Intelligencer also had an article. Suzanne asked members to e-mail Scott Wilson, editor of the Leader, thanking him for the coverage of our event.

Suzanne told the Master Gardeners that a majority of the Board voted to have a celebration in honor of the hard working and dedicated volunteers that contributed to the Yard and Garden, plant sale, and Secret Garden successes this year. This is meant to be a big thank you from the Foundation that does not include any contribution from the Master Gardener members. The party is scheduled for July 11, from 1 p.m. to 4 p.m. at Finn River Farm. A local caterer will provide food from local farms and other vendors. The party will be limited to members "in good standing" (those who completed and reported their 2009 hours and submitted their reapplications this year) and interns. Some of the profit that exceeded the budgeted revenue from the plant sale will be used. We will not include spouses/significant others for this event because of these cost constraints. Also, if an unbudgeted expenditure exceeds \$1000, it must be approved in a ballot by the general membership.

Discussion points: Could we pay for spouses/significant others? Is this a legitimate use of Foundation funds? Suzanne had checked with the State Foundation and there was no rule against having this celebration. Mark Clark reported that at the last State meeting they were told that volunteers cannot receive reimbursement but can receive in-kind services. Suzanne asked Mark and Mike McFadden to contact WSU for the exact wording that should be used. Both the picnic and the holiday party use Foundation funds. Both of these events are in the budget. Since there are so many divergent views, should we try to budget this for next year? (This was decided to be a one-time event because of the extra efforts that were made by the volunteers this spring.) Valerie Parker would like a vote by the full membership to see if the members want this party. Mark Clark mentioned that the WSU survey question on receiving caps, shirts, etc for service received a majority of negative responses. A request was made to table the discussion to the next meeting.

A motion was made and seconded to provide a notice of a special ballot on this party. It would require a vote of the membership. A majority of members voted yes for this motion.

Suzanne stated she will cancel the farm and the caterer since the next general meeting is not until July 8.

We still do not know if the Spruce Room is available in July for the Foundation meeting. Suzanne has booked the Jefferson County Library as a back-up. The Foundation meeting on July 8 will be from 4:15 to 6:15pm if it is at the library. It was suggested that we instead try to get space at H J Carroll Park for this meeting since it is the annual plant exchange between members.

Diane Threlkeld received a call from Scott Wilson at the Leader. He would be interested in running a weekly Master Gardener column. Diane thought if 4 or 5 Master Gardeners were interested in this project, it would result in only a once a month commitment for each volunteer. Call or e-mail Diane if interested.

Mark Clark noted that Kris Burns is also looking for a successor to her position as editor of our monthly newsletter.

Judy Johnson reminded everyone that the Master Gardener Park dedication is in August (not that far away.) She needs additional help for the next several weeks to spiff it up.

The meeting was adjourned at 5:10pm

Prepared and submitted by Barbara Smith, Secretary.

Giving Back to the Community: Spring Grants Awarded

In April, the Grant/Scholarship Committee thoughtfully reviewed 13 wonderful applications. The Committee recommended 10 for a total of \$4513 and the Board approved our recommendations at the May 7 meeting. The Grants program, in only its second year, has awarded a total of \$15, 913 to community projects!

The Grants committee salutes all of you for your hard work at Yard and Garden, the Plant Sale and the Secret Garden Tour for the funds to support this activity. The committee also realizes that without the community support of our fundraisers, this program would not be possible. The threefold benefit of this program is (1) The application process encourages all applicants to think of sustainable projects with safe horticultural practices to benefit the community, (2) the money awarded gives back to the community and (3) the program gives us a great sense of accomplishment through others. The committee strives to be good stewards of the money and the only administrative expense of the committee is postage. A site visit is made to each applicant's project to ensure that the project is in keeping with Master Gardener mission and goals. Each recipient of the grant is required to give status updates and a final report. Some will be asked to give a report at the Foundation meeting and some will show us their work directly at a tour in the fall.

The following is a brief description of the spring grants:

Training Grant: Carol Self, our own Master Gardener, was awarded funds to assist with supplies and expenses for a 20 hour short course, "Train the Trainer for Identification of Pacific Northwest Insects" at the Oregon State Hermiston Agricultural Research and Extension Center in Hermiston, Oregon. Carol will share her information at plant clinics, Master Gardener Training and at to-be-scheduled Master Gardener meetings.

North Beach Community Garden: The North Beach Community Garden has been in existence for 22 years. Eight to 12 twelve individuals maintain this garden for their families' needs and share food with the food bank. Each year they plant corn, which is shared with the whole North Beach Community at a September annual corn feed and potluck. They were awarded funds to upgrade their watering system to drip irrigation for water conservation.

OlyCap Pea Patch Project: The OlyCap Pea patch is expanding on their first successful year of 23 plots, to 34 plots. Last year, the garden was provided MG Grant funds for deer fencing. This year, we are providing funds to assist in the purchase of tools, gate material and outreach materials. This garden not only provides plots for individuals to grow their own vegetables but also sets aside plots to grow food for Jefferson County Food banks. The garden does on site composting as well as other organic practices. They also provide classes open to the community on organic gardening and food preservation.

Quimper Community Harvest: Last year, the MG grant provided money to purchase ladders and they were able to glean 1100 pounds of produce for schools and senior centers, with 2700 pounds of that primarily for food banks in Port Townsend. In addition to gleaning, they planted an orchard of plums, apples and pears at Blue Heron Middle school. As they are gathering fruit that would end up rotting, they also prune much-neglected trees for owners who no longer have the time or ability to do so. This year, we funded additional ladders and pickers to store in the South County for the convenience of harvesting fruit in Port Hadlock, Chimacum and Marrowstone Island.

Quilcene School District: The Quilcene School District was granted money for child size gardening tools to supplement their Department of Ecology Grant. They have a green house and a garden that is tended year round with help from volunteers in the community. Their goals are to help students learn all about food production from seed to harvest. They hope to awaken the spark for students to want to grow their own food, learn about environmentally protective practices such as composting and safe pest management. They hope to not only have fresh vegetables for the cafeteria, but share with the food bank.

Giving Back to the Community: Spring Grants Awarded (Con't)

Brinnon Community Garden: The grants program provided funds to assist the Brinnon Community Garden for a project that would enable persons wanting to garden who were not able to bend or sit. They will expand their 2-year-old garden by placing stock tanks on platforms for waist-high gardening.

Eddy Street Community Garden: This community garden is supported and managed by sixteen people. The members researched the Paul Gautschi garden near Gardiner, as it is a garden that is very productive, yet uses no supplemental watering with the use of heavy mulch. They also researched the “Ruth Stout no work” system. They determined that it would take a few years of those 2 systems before they can achieve those goals. In the meantime, their garden needed a more efficient watering system. Their aim is toward a garden that can be sustained with very little water and a lot of mulching. We provided funds toward efficient irrigation.

Grant Street Elementary School: We were pleased that Dorothy Stengel, an enthusiastic teacher, submitted the third proposal for their ongoing student’s gardening experience. We first provided them money to buy a worm bin for lunch food composting. They then received other funding and support through various agencies to expand their gardening experience in their large garden and we provided money for child size tools. This year we assisted them in buying additional tools so more students can be active in the garden at the same time.

The Blessings Garden: Judy Johnson and Jo Yount spearheaded the development of this vegetable garden utilizing organic principles. This garden was on our Secret Garden Tour this year. The garden’s abundance is shared with the families at that church as well as neighbors and the food bank. We provided funds for them to build a special raised bed for carrots.

Swan School: Swan School is a non-profit independent school serving children from preschool to 6th grade. They are allowed space in a nearby community garden (Patch22) where they prepared the soil, planted and harvested produce last year. Their goal this year is to incorporate sustainable, organic gardening into the core curriculum and continue to garden in their plot at the community garden. Master Gardener funds will help them build a window greenhouse and or tools.

Respectfully submitted, Shirley Williams, Chair, Grants/ Scholarships

Garlic Scape Pesto

I made garlic scape pesto which can be used in pastas, with grilled veggies. I plan to try it on pizza next time I make it, and I used it as an ingredient in a vinaigrette salad dressing, rather a garlic clove.

From MG Joann Raines’s blog: <http://eatingetc.blogspot.com/2010/06/garlic-scape-pesto.html>

Garlic Scape Pesto

1/2c chopped garlic scapes (about 5-6), bulbous tips cut off
1/2c shredded parmesan reggiano
1/2c chopped walnuts or pine nuts
1/2c olive oil
1T basil, optional
sea salt, to taste



- 1) In a food processor, combine the scapes, parmesan, & walnuts into a smooth paste.
- 2) Scrape down sides of bowl; then, with blade running, slowly drizzle in the olive oil & process until oil is thoroughly combined and pesto is smooth.
- 3) Add salt if desired.
- 4) Store in air-tight container in fridge for a few days, or freeze.

Schedule of Events

July 2010

July 1– Board mtg
July 8-- Foundation mtg
July 15– Double MG Garden Open,
 Lesley Barron & Kathi Boyker 10am-
 2pm

MG Board Meeting - First Thursday of
 each month, 1:00 pm, Jeff. Co. Public
 Library, Shold Room. Port Hadlock

MG General Foundation Meeting -
 Second Thursday of each month,
 3-5pm , WSU/Spruce Room

Do you have an item for the Calen-
 dar/Schedule of Events? Please submit
 to the editor at
burns_cabin@olyopen.com, or call Kris at
 360-765-4224. Committee chairs are
 especially encouraged to submit dates &
 times of meetings!
Newsletter Deadline: **25th** of the month.

Sun	Mon	Tue	Wed	Thu	Fri	Sat
				1 JCMGF Board Meeting, 1pm, Jeff Co Public Library	2 Plant Clinic Co-op 2:30- 5:30	3
4	5 Plant Clinic WSU 1-4	6	7	8 JCMGF Foundation Meeting, 3-5pm WSU	9 Plant Clinic Co-op 2:30- 5:30	10
11 Plant Clinic Chimacum FM	12 Plant Clinic WSU 1-4	13	14	15 Garden Open: Barron & Boyker 10-2	16 Plant Clinic Co-op 2:30- 5:30	17
18	19 Plant Clinic WSU 1-4	20	21	22	23 Plant Clinic Co-op 2:30- 5:30	24
25 Plant Clinic Chimacum FM	26 Plant Clinic WSU 1-4	27	28	29	30 Plant Clinic Co-op 2:30- 5:30	31



WSU Jefferson County Learning Center
 201 West Patison
 Port Hadlock WA 98339

