



MASTER GARDENERS JEFFERSON COUNTY

© Cynthia Elmore 2001

NEWSLETTER

October 2012

WSU-MGFWS Advanced Education Conference Reviewed



The 2012 Conference was held in Pasco, Washington. Pasco was delightful -- warm but not hot -- an open plain rising from the broad Columbia River. The venue was the TRAC Center (Trade, Recreation, Agriculture, Commerce?), which was very comfortable and amply to our needs, with a quite nice \$99 Holiday Inn Express immediately adjacent to the venue. The room rate included hot breakfast AND afternoon Happy Hour!

The day before the conference actually got underway, several tours were offered, including a winery tour, a garden tour, a jetboat tour up "the Hanford Reach," and a tour of some of the DOE Hanford reactors. I took the jetboat ride 40 miles up the Columbia River to the region called the "Hanford Reach." I figured that referred to the stretch of river below the Priest Rapids Dam, but above the calm waters of Lake Wallupa stored behind Umatilla Dam. While most of the lower Columbia is a series of reservoirs backed up behind the massive BPA dams, the Reach is a wild running river with gravel bar islands and swift waters. We saw deer, coyote, osprey, salmon (and salmon fishermen), pioneer settlements and trail routes, and many DOE nuclear reactors in various stages of decommissioning. This was a very scenic and interesting excursion on a beautiful day.

The advanced education component of the conference was broad and deep. I attended session on slugs and snails, composting, upcoming insect pests, MGs on Facebook, MG training, and how MG foundations and WSU Extension work together.

The large group speakers were meant to entertain. Thursday evening's speaker was a rep from a plant marketing company called "Proven Winners" who gave a slide show on their new offerings. Friday morning brought an "inspirational" speaker who talked about feeling special while making a flowered wreath. Friday night after the awards ceremony, we watched a beautiful slide show of photos taken over a span of 40 years showing the beauty of the four seasons in the eastern Washington drylands.

Inside this issue

From the Chair;	2
Membership Update	
Fall Programs	3
Conference Review	4
Cont.; The Garden	
Column	
Grants Update	5
2013 Board Nominees;	6
Plant Clinic	
Earthworms	7, 8
MG Park Update; Name	9
that Plant	
Misc happenings; Reading	10
Room	
Kitchen Korner; Answers	11
to Name that Plant	
FIELD dance shenanigans	12
Farm Tour recap	13
Quilcene Fair Gardener's	14
Corner going's on	
JCMG Aug Board Minutes	15
JCMG Sept Board Minutes	16
JCMG Sept Foundation	17
Minutes	
Calendar	18



Bee on blossom photo submitted by: Patricia Weedman.



Chair's Eye View of the (Master) Garden



I guess it is time to return to responsibility. As you can see, the aspen are starting to turn even though the fireweed in the foreground still shows some color here in Wyoming's Beartooths. I guess this means we should get home to Port Townsend and get with cleaning up the garden before the November rains start. I hope you all have had a wonderful summer in your gardens and started your winter vegetables when you should have. I am afraid I will be too late.

I hope to see you all at our October meetings and to find out all that JCMGs have accomplished.

Roger McPherson



Membership Update

Thank you all for diligently posting your volunteer hours. As of mid September we have 91 active members with 74 recording their hours for 81% membership reporting. We are #6 out of the 35 counties reporting hours, HURRAY!

We also want to thank all members for updating your 2011 hours. Keep up the great work and remember to post all volunteer hours by the close of the year.

JCMGF Membership



Extension Staff

Phone: (360) 379-5610

Dr. Laura Lewis, ext. 202
WSU Extension Chair
Master Gardener Program Coordinator

Sally Chapin, ext. 200
Receptionist/Office Assistant

JCMG Foundation Executive Board 2012

Chairperson

Roger McPherson (360) 385-0175
roger76@olympus.net

Co-Chairperson

Janet Mizuguchi (360) 437-8128
rarjms@msn.com

Secretary

Linda Pfafman (360) 379-1782
lindapfafman@gmail.com

Treasurer

Phil Meany (360) 385-7363
pmeany245@q.com

Board Members:

Pat Aniotzbehere (360) 385-1415
mzmouse82@q.com

Mark Clark (360) 379-4845
sonomarko@yahoo.com

Ali Dyche (360) 732-0433
alibruce113@yahoo.com

Mike McFadden (360) 765-3312
lelandlakehouse@wildblue.net

Marian Meany (360) 385-7363
meany501@olympus.net

MG Coordinator:

Sarah Fairbank (360) 385-2346
sarah@olympus.net

MG Foundation of WA State Rep:

Mark Clark (360) 379-4845
sonomarko@yahoo.com

M.G. NEWSLETTER

Do you have an idea for an article in the newsletter? A book review, a favorite recipe or perhaps an upcoming gardening event? Do you chair an MG committee? Please submit all items for publication to Ali Dyche at 360-732-0433 or via email at alibruce113@yahoo.com, by the 20th of the month. Thank you!



Foundation Meetings Fall Schedule 2012

Tri Area Community Center,
10 W Valley Rd
Chimacum
3pm-5pm

October 11th, 2012

Apples History and Culture with Lois Twelves



Lois will discuss her vast knowledge of apples: their history, culture and changes in the world of apples.

Lois grew up in Wenatchee in an apple orchard. Her college education is in biology and zoology. She has read just about every book there is about apples.

Sarah Spaeth- Jefferson Land Trust

November 8th, 2012

Land Trust Farmland Conservation

Sarah Spaeth, Executive Director, Jefferson Land Trust.

Sarah will talk about the working lands and working forests aspects of Jefferson Land Trust's mission.



Jefferson Land Trust is a private, non-profit organization that works with cooperation and wiliness of landowners to preserve habitat, working lands, farms and forest forever in Jefferson County. JLT was founded in 1989. It is currently staffed with 5.2 FTE. The land trust works with numerous organizations to preserve land. Land trust works in several ways to accomplish this objective. One is by legal means of placing conservation easements on lands.

Sarah Spaeth has held this Executive Director position since 2010, and she has worked for the Land Trust since 1995-1996. Background in Marine Biology, Sarah is an extremely accomplished person according to several key stakeholders in the community, especially Barbara Arnn.

Sarah was originally hired as a project coordinator in 1996 for what was then called the North Quimper Peninsula Wildlife Corridor. Sarah combines her role as executive director with that of conservation director, managing the work that is at the core of the Land Trust mission—our land projects. She works closely with land owners and community members, as well as governmental and non-profit agencies to shepherd all of our land projects through to protection.

(from Land Trust Website)

December brings our Annual Holiday Party. This will be our monthly Foundation meeting.



WSU-MGFWS Advanced Ed Conference Reviewed Cont



The Washington State Master Gardener Foundation held a brief "annual meeting" just before the start of the conference, and Chris Bailey was re-elected for another (full) term as President of the Foundation.

I took four boxes of Jefferson County MG Foundation merchandise for sale, and had only two boxes to bring home! The PT Food Co-Op donated a very nice reusable shopping bag full of the making for a fine Italian meal (less the vino) to be raffled off. It was as well received as our fleeces and shirts, and raised serious cash for the State Foundation.

I was pleased to have been able to attend the classes, to see people I have been working with as your County Representative and MGFWS Board member, and to meet new people and learn about their MG experiences and perspectives.

Next year the WSU-MGFWS Advanced Education Conference will be so close to us there is little excuse not to attend. Block you calendar now to reserve the dates September 26-27-28, 2013 to attend the conference.

THE GARDEN COLUMN



This is an excellent opportunity to volunteer for Jefferson County Master Gardeners and it has nothing to do with playing in the dirt. If you are interested in writing and have experience meeting fairly strict deadlines, this is the job for you.

The Garden Column is a weekly 350 word article on any part of gardening that might be of interest to the readers of The Leader (not just Master Gardeners). It is a serious commitment not to be taken lightly, as it is generously sponsored by Henery's Garden Center, who pays a fair amount of money to have these articles included in an advertisement every week.

The original intent of the garden column was to recruit MG members to help write the column, which is a lofty goal, and for me, the most challenging part of the job. If you are interesting in taking over this committee position, please contact me at christinalacie@earthlink.net or phone me at 385-1657.

However, if you are not interested in taking over the committee position, the column needs to continue, and I am guessing that the reading public could use a change in voice now and then. So if you have a garden specialty that you are passionate about and care to write a column on, please contact me as well. Just as the show must, the column must go on, and it will.



Submitted by: Christina Lacie; The Leader Garden Columnist

Grants Committee Report: Your Money at Work! Part 3

This fall the Grants committee will be reviewing and determining yet another set of projects we will fund. The lucky recipients will be announced November 10.



NW School of Wooden Boat building:

The School decided that they should improve their boat building site, an old gravel quarry. They cleared invasive species of blackberries, and scotch broom from hillsides and planted trees typically used in boat building such as Sitka Spruce, Western Red Cedar, Black Locust and Pacific Pine. As wood workers, they felt it ethically imperative to connect the students to tree planting, conservation and stewardship on the local level. Simon de Voil, an intern, under the direction of Wayne Chimenti, Community Boat Build Director spearheaded the project. Simon returned to Scotland this fall, but Wayne and his crew are committed to the project. This spring, the Master Gardener grant funds were used to provide mulch and protection for the young trees as well as the purchase of fruit trees for a picnic area.



Native Plant Garden:

Under the direction of Linda Landkammer, the Native Plant Garden located at HJ Carroll Park in Chimacum has been the recipient of grant funds three times to provide educational signage. The goal is to demonstrate the native plants that grow in the different mini climates we have in the Pacific Northwest. In 2008, our funds provided the "Native Plant" signs at the entrance to the Park. In 2009, the funds were used to fund individual plant signs. This spring, they are upgrading the plant signs to more durable metal signs with our funds and they will be laminated.



2013 JCMGF Board Nominees



This November at the monthly general meeting, we will be having our Executive Board Election. Listed below are the Master Gardeners who have stepped forward and volunteered to run a position.

Bob Grindeland – Chairperson
(One year term)

Candice Gohn – Co-Chairperson
(One year term)

Jill Bacchieri – Secretary
(One year Term)

Sonja Henderson – Treasurer
(One year term)

Sharon Garrels – Board Position
(Two year term)

Diane Threlkeld – Board Position
(Two year term)

Janet Mizuguchi – Board Position
(One year term)

I hope all of you will make an effort to attending this November Monthly meeting and will vote in this up-coming election. Nominations from the floor will also be welcomed for any of the above listed position during this process.



Hope to see all of you there to partake in this important event in the Master Gardeners Foundation operations.



Plant Clinic 2012

Plant Clinic has closed for the 2012 season. Thank you to the Plant Clinic Crew and all of their volunteers.

People may still call or email questions to us at WSU. They will be answered to the best of our ability as always.

See you next season!

JCMG Plant Clinic Crew

Lys and Ali chatting with a future MG at the Chimacum Plant Clinic located at the Chimacum Farmers Market. Photo submitted by: Mike McFadden



EARTHWORMS



Redworms or red wigglers, manure worms or compost worms, live in the soil in the surface layer of decaying vegetation.

They feed on this layer, multiplying in numbers, and die, distributing their nutrients over a large area. They're often used in worm bins.

Earthworms are burrowers and soil processors, eating dead organics and rock particles, grinding and excreting them as a finely ground mix that serves as food for bacteria. They can survive in harsh situations better than redworms. They do not assimilate the organics for themselves to the same extent as redworms. They don't multiply as quickly.

Worms are cold blooded and are not born. They hatch from cocoons smaller than a grain of rice. The largest earthworm ever found was in South Africa and measured 22 feet from end to end. An earthworm can grow only so long. The size of an adult worm will depend on what kind of worm it is, how many segments it has, how old it is and how well fed it is. Earthworms have the ability to replace or replicate lost segments, depending on the species of worm, the amount of damage to the worm and where it's cut. Even though worms don't have eyes, they can sense light, especially at their anterior (front end). They move away from light and will become paralyzed if exposed to light for too long (approximately one hour).

Earthworms don't like their burrows disturbed. They'll tunnel deeply in the soil pulling the organic matter into the soil layer and bring subsoil closer to the surface where they mix it with the topsoil. They feed on the surface on dead grass, leaves, etc. Nightcrawlers (also known as dew worms) often surface at night to pull those fallen leaves into their burrow. As the leaf decomposes a little they pull small bits off to munch on. They also take in soil as they burrow, extracting nutrients. As they move about, they secrete worm slime. It contains nitrogen which helps hold together clusters of soil particles in formations called aggregates, helping to increase the amount of the soil's air and water.

Earthworms break down organic matter into the form that plants use while they leave behind valuable castings or vermicompost as fertilizer. 500,000 worms living in an acre of soil could make 50 tons of vermicompost. That's equivalent to 100,000 one-pound coffee cans. These same 500,000 worms burrowing into an acre of soil can create a drainage system equal to 2,000 feet of 6-inch pipe. A healthy soil will have 25 earthworms per square foot, equal to a million worms per acre.

Castings or vermicompost is richer in nutrients than the surrounding soil and often has three times more calcium and several times more NPK and micronutrients. Vermicompost can increase germination and growth in many plants. Only 5% vermicompost added to commercial growing media is all that's needed. In experiments, twice as many plant roots grew in pure vermicompost than in sphagnum peat moss. And potting mix with 10% vermicompost added improved the germination of low viability seeds by 43%. Adding worms to crop soil is now considered standard practice in New Zealand.



EARTHWORMS



Microbes in a worm's gut can help destroy harmful chemicals and break down other organic wastes. Worms also neutralize soil pH. Crops grown in earthworm inhabited soil have shown yield increases from 25 % to over 300%. Earthworms help to eliminate lawn thatch. Soils rich in earthworms have fewer harmful nematodes. A large earthworm population suppresses weed growth. They're free farm help, turning the soil, bringing down organic matter from the surface and mixing it with the soil below.

Having worms in your garden is an excellent sign that your soil is healthy. They live where there is food, moisture, oxygen and a favorable temperature. Without these, they'll leave. They can eat about a quarter to a half of their weight each day. They have no teeth but strong mouth muscles.

How healthy is your soil? Dig up and sieve the dirt from a square foot of your garden soil. How many worms did you find? Healthy soil can produce 40 tons of vermicompost per acre.

You can attract earthworms to your garden. Your soil should be mulched with organic mulches to help stabilize soil temperature and moisture. Mulch provides the worms their food and shelter. Native mulch and compost are the most valuable. Unfinished compost is one of the best worm food mulches. Most organic fertilizers tend to have a positive effect on earthworms and increase worm densities. Most artificial synthetic fertilizers reduce earthworm populations. Earthworms are also sensitive to salts and several chemicals.

Earthworms need a continuous supply of calcium, and are not found in soils low in calcium. Earthworm numbers doubled when soil pH rose from 4.1 to 6.7. Worms can lose 20% of their body weight each day in mucus and castings, so they need soil moisture to stay alive. They're active only when the soil is moist. If a worm's skin dries out, it dies. During drought, some species burrow deep into the soil and are inactive until rain 'reactivates' them.

After four years, no-till fields had twice as many worms as cultivated soils. However, shallow cultivation may not affect worm numbers. Be aware that tilling not only kills beneficial fungi but reduces the number of earthworms. But the bodies of earthworms are nutrient rich in minerals, amino acids, proteins and vitamins. When they die, their nutrients are released in the soil.



Submitted by: Judi Stewart

Adapted from "Worm Facts" and "Organic Management for the Professional"



Fall fruits and flower photos submitted by: Patricia Weedman.

MC Park Update



I send out my heartfelt thanks to all those who helped make the Park shine this summer. Along with Shirley Williams, we thank you and look forward to seeing you this fall for cleanup. The long sunny days really brought out a lot of growth on many annuals and perennials.

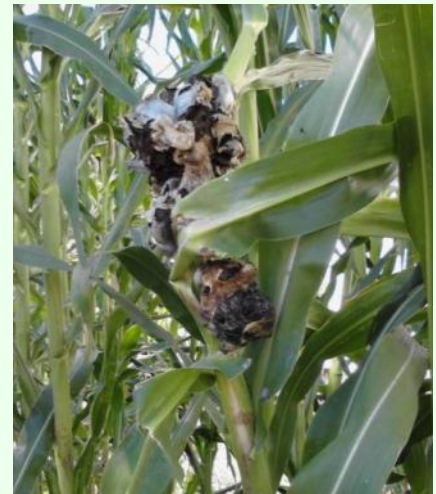
Thanks again, Judy



NAME THAT PLANT

This month's Name that Plant is a two part question. First, what is the type of plant in the picture? Second, what are the growths on the top and bottom of the plant?

Answers on page 11



Photos submitted by: Sonja Jackson

Miscellaneous Tidbits, Happenings and Items of Interest



—The North Olympic Fruit Club promotes the growing of fruits and nuts. They provide a wide range of useful information in their monthly programs which are offered free to the public. The club meets the first Tuesday of the month at the Tri-Area Community Center at 7 pm.

—The Olympic Peninsula Mycological Society is a group devoted to the knowledge of mushrooms, from harvesting wild species to home cultivation. Different topics are covered each month and programs are free to the public. OPMS covers the entire Olympic Peninsula, and thus meets alternating months at the Tri-Area Community Center and the Gardiner Community Center. Meetings begin at 6:30 pm. **Oct is Tri Area**



—The Port Townsend Saturday Farmers Market, located on Tyler St in Uptown Pt Townsend, will be open for the 2012 growing season from Apr-Dec. Market hours are Apr-Oct from 9 am-2 pm and Nov-Dec from 10 am-2 pm.

—The Chimacum Farmers Market, located at The Chimacum Farmstand at 9122 Rhody Dr (the Chimacum 4-way stop), will be open for the 2012 season from May-Oct. Market hours are 10 am-2 pm.



—East Jefferson Bee Keepers are a group of bee enthusiasts that meet to share tips, ideas and experiences both good and bad on the matter of raising bees. Educational programs, to be announced as scheduled are free to the public. EJBees meets the second Tuesday of the month at the Jefferson Co Library at 6 pm.

If you have a misc tidbit, happening or item of interest that you would like posted on the bulletin board, please submit your item to Ali Dyche at alibruce113@yahoo.com by the 20th of the month.

READING ROOM



This month's book selection is Susan A Roth's "The Four Season Landscape". It will show you how you can have a beautiful garden full of colors, textures and shapes year round, not just for a couple of seasons.

A year round garden isn't just annuals or perennial flowers. It also includes trees, shrubs, vines, grasses and more. It allows one to be more creative and free with their plantings rather than constricting the gardener to a certain set of "rules".

A year round garden can be strictly ornamental or it can include edibles that are not only serviceable for food but can add that something special to your flower beds, they aren't just for the vegetable garden anymore!

So take a look at your yards and gardens with fresh eyes and see what you can create year round!



Submitted by: Ali Dyche

Kitchen Korner



Amish Applesauce Cake

is packed with old-fashioned goodness and aroma that only a from-scratch cake can deliver. Applesauce adds a tangy-sweet taste and moistness to this wholesome cake that will take your taste buds to a Lancaster County farmhouse. It's a wonderful way to welcome in fall!

Baking Time: 30 min

Ingredients

- 1 cup sugar
- 1/2 cup vegetable shortening
- 2 eggs
- 2 cups all-purpose flour
- 1 teaspoon ground cinnamon
- 1 teaspoon baking soda
- 1/2 teaspoon salt
- 1 1/2 cups applesauce
- 1 teaspoon vanilla extract
- 1/2 cup chopped walnuts; optional



Directions

1. Preheat oven to 350 degrees F. Coat a 9- x 13-inch baking dish with cooking spray.
2. In a large bowl, cream sugar and shortening with an electric beater on low speed. Beat in the eggs, one at a time. Add flour, cinnamon, baking soda, and salt; beat until well mixed. Add applesauce and vanilla; mix well then stir in the walnuts and pour batter into prepared baking dish.

Bake 30 to 35 minutes, or until wooden toothpick inserted in center comes out clean. Let cool.

Note

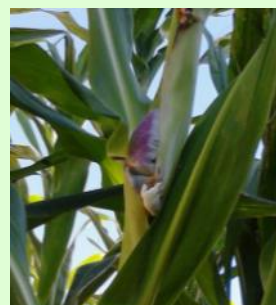
For a fancier treat, place thinly sliced apples in the bottom of the cake pan before pouring the batter in. Then when you turn the cake out, drizzle with a glaze that's made by mixing 1/2 cup confectioners' sugar and 1-2 teaspoons water.

Submitted by: Ali Dyche

NAME THAT PLANT ANSWERS

This is field corn. It grows much taller than sweet corn and is grown primarily for animal feed. The toe-like growths at the bottom are extra roots that help to anchor the corn to the ground during a wind or rainstorm. The swollen reddish gall towards the top is formed by smut, a multicellular fungi. When the gall bursts the fungal spores and attack the reproductive systems of the host plant.

Submitted by: Ali Dyche



FIELD PROGRAM BARN DANCE



To kick-off the Jefferson County Farm Tour this year, we had a Benefit Dance at H.J. Carroll Park on Saturday, September 15th. This dance was to benefit the WSU FIELD Internship program (Farm, Innovation, Education, & Leadership Development). The FIELD program is a co-led effort by area farmers and the WSU Jefferson County Extension program. The dance featured live music by FIELD Intern Eli Lamb and his band Mutton Chops and well known area musician Cort Armstrong and Blue Rooster. Donations and sales from donated food and alcohol as well as a silent auction raised approximately \$1,500 for the FIELD program. Over 250 area residents enjoyed dancing and mingling under the Rotary Pavilion's twinkle lights from 6pm to 10pm. Many asked if we would make it an annual event and we want to extend a special thanks to Jill (MG class of 2012) for being our welcome table volunteer and selling Farm Tour Grand Prize tickets throughout the evening.



10TH ANNUAL JEFFERSON CO FARM TOUR



The Farm Tour this year was a great success, in large part because of all of the effort from our Master Gardener volunteers who were placed at many of the 15 farms on tour. We estimate that there were close to 4,000 visits to our area farms on September 16th, with educational outreach activities, entertainment, and food and refreshments at all of the farms, it was a wonderful sunny day to experience Jefferson County agriculture. Additionally, WSU Jefferson County Extension was able to raise funds to contribute to managing the tour next year through our Grand Prize Drawing. We sold approximately 360 tickets and had 4 winners for the wonderful overnight accommodations that were donated to WSU for the Farm Tour. We hope to be able to do something similar for the Tour next year as well.



Quilcene Fair Gardener's Corner

This year was grand for the Gardener's Corner at the Quilcene Fair. There were displays, contests and more! Take a look and see what you might have missed!!! *Photos submitted by: Bonnie Story, Chair of Gardener's Corner for the Quilcene Fair*



Left: The longest zucchini contest winners.



Right: All of the contest entries.



Left: Jam and jelly contest winners.



Left: The tiniest carrot contest winners.



JCMGF August 2012 Board Meeting Minutes



JEFFERSON COUNTY MASTER GARDENER FOUNDATION- BOARD MEETING

MINUTES OF August 2, 2012

Members present: Voting members –Janet Mizuguchi, Co-Chair; Linda Pfafman, Secretary; Board Members –Mark Clark, Marian Meany. Non-voting member – Jill Bacchieri; Visitors – Hugh Musser (Chair of Nominations Committee); WSU JC Extension – MG Coordinator – Sarah Fairbank

Call to order: The meeting was called to order by Janet Mizuguchi, Co-Chair at 3:05 PM.

Quorum: Four of the nine voting board members were present.

July 5, MG Board Meeting Minutes: The July 5, 2012 minutes were approved through an e-mail vote.

Nominations Committee Report (Hugh Musser, Chairman): Hugh gave a report on the election nominations slate. All positions have at least one candidate for office.

D & O Insurance: Action item: Mark Clark is at ask the State MG Foundation Board about D & O Insurance coverage.

Action item: Phil Meany is to get a printout of D & O Insurance policy from Wilson Insurance and give to Mark.

Summer Picnic: The summer picnic is scheduled for August 18th at Mike McFadden's place on Lake Leland.

WSU Ad Hoc Advisory Committee: The advisory committee met with Dr. Lewis and is preparing a questionnaire/ survey to ask community input on the ways MG could be of service. Target date for the survey form release is October 1. Advisory committee members are Mark Clark, Janet Mizuguchi, Marcia Schwendiman, Candice Gohn, Shirley Williams, Sarah Fairbank, and Laura Lewis. The committee will discuss restructuring committees in November.

Yard and Garden Series Update: The committee is meeting monthly and are still recruiting speakers for next year's series that will be held at Jefferson County Fairgrounds instead of the Port Townsend Community Center.

Indian Island Field Trip: This field trip was cancelled because of a low response (only 5 people expressed an interest in going).

Reminder to report MG Hours on the Website.

Farm Tour: The Jefferson County Farm Tour is scheduled for September 16. Sarah asks for MG to help- WSU receptionist is handling the recruitment of volunteers.

Twin Vista Ranch on Marrowstone Island: The grand opening ceremony of the Twin Vista Ranch has been rescheduled for October.

Raffle Gift from JCFMG for State MG Conference in Pasco September 13 -15. Hopefully the Mark will be able to take a gift basket (donated by PT Food Co-op?) to the conference as a raffle item.

MG Foundation Logo Sign: It was decided to mount the logo on the podium for the Foundation Meetings.

Sustainable Garden Brochure: The reprinting of the Sustainable Garden Brochure with the addition of the WSU logo was discussed. The brochure originally was written by Kathy Gilmore, Mary Rothschild, Marcia Schwendiman, and Chris Wilson.

Adjournment: Janet adjourned the meeting at 4:20 PM.

Respectfully submitted by Linda Pfafman, Secretary 9-8-12



JEFFERSON COUNTY MASTER GARDENER FOUNDATION BOARD MEETING MINUTES September 6, 2012

Members present: Voting members –Janet Mizuguchi, Co-Chair; Phil Meany, Treasurer; Linda Pfafman, Secretary; Board Members –Mark Clark, Mike McFadden, Pat Aniotzbehere. Non-voting member – Jill Bacchieri

Call to order: The meeting was called to order by Janet Mizuguchi, Co-Chair at 3:00 PM.

Quorum: Six of the nine voting board members were present.

August 2, 2012 Master Gardener Foundation Board Meeting Minutes: After some discussion, Linda moved to accept the August 2, 2012 MGF Board meeting minutes with three corrections. Mark seconded the motion. The motion passed with a unanimous voice vote.

Treasurer's Report: Phil Meany, Treasurer, reported the bank balance as \$34,986. Janet moved to accept the financial report and Mike seconded. The report was accepted. Phil asked if some past financial papers could be archived at WSU Extension office. Action item: Janet will "free up" some space in the MG Foundation cabinet at WSU Extension Office for this paperwork

D & O Insurance: Wilson Insurance would not provide a copy of a D & O Insurance policy. A discussion followed this announcement. Action item: Phil to send additional e-mails on this topic.

Nominations Committee Update: Janet gave an update on the work of the nominations committee. Now all positions have candidates except for treasurer. Action item: Janet will talk with Hugh about recruiting for the treasurer's position.

Summer Picnic: Fifteen people attended. Weather was beautiful. Mark moved and Janet seconded the motion that the MG F Board express appreciation to Mike McFadden for opening his home to Master Gardeners for their annual summer picnic. The motion was approved unanimously. The Board discussed possible locations for next year's picnic. Some of the locations that were suggested include Twin Vista on Marrowstone Island, Spring Rain Farm, HJ Carroll Park, and Rain Coast Garden.

State MG Conference in Pasco September 13 -15. Mark talked about the JCMGF inventory that he plans to take to the state conference in Pasco to sell. He has arranged for a table at the Pasco conference (\$35 fee which will be deducted from the revenue). The organizers of the conference also take a small percentage of the revenue to cover their costs (Mike thought it was 1 or 2%). Marian moved that the inventory would be lowered to half price on the last day of the conference. Mike seconded the motion. It passed unanimously. Jill worked on securing a donated raffle gift (value of approximately \$60) from the Food Co-op. The gift is an "Italian dinner feast" in a Food Co-op reusable bag. Mark will take it the conference along with the inventory that will be for sale.

WSU Ad Hoc Advisory Committee: A first draft of the needs assessment has been circulated to the committee.

MG Training 2013: 30 people have expressed an interest in the upcoming training. Diane Wiklund will be the classroom support person.

2012 Farm Tour: There are two shifts per day- AM and AM. More help is needed. A list of the farms will be published in the paper.

Plant Clinics in Chimacum and Quilcene There will be a plant clinic and this Sunday and on the 23rd in Chimacum at the Chimacum Farm Stand and another in Quilcene on Saturday. Mike would appreciate help or he will stop doing it. The response is between 12 and 20 questions per clinic.

Website for IPM and homeowners: www.growsmartfrowsafe.org

Adjournment: Janet adjourned the meeting at 4:10PM.

Respectfully submitted by Linda Pfafman, Secretary 9-13-12

JCMGF September 2012 Foundation Meeting Minutes



JEFFERSON COUNTY MASTER GARDENER FOUNDATION GENERAL MEETING REPORT/ MINUTES September 13, 2012

MG General Meeting:

26 people attended the meeting that began at 3:05 PM at the Tri-Area Community Center.

Presentation: John Bellows, Spring Rain Farm, talked about the FIELD program at his farm. Spring Rain Farm started in 1993 in Mt. Vernon and has been in Chimacum for the last 4 years on 26 acres that is bisected by Chimacum Creek. It is a certified organic farm with fruit, vegetables, poultry, sheep, rabbits, and bees. Volunteers are needed on September 30th to help weed around the bases of the blueberry plants.

Meeting: Janet Mizuguchi chaired the meeting following the presentation and a short break. Sherine Murphy, Ann Raymond, Laura Klose, and Ann Klosterman talked briefly about collecting, drying, sorting, and saving seeds. There will be a presentation by the Seed Alliance in January and people are encouraged to bring seeds to share.

Treasurer's Report: Phil Meany gave a brief treasurer's report. The Secret Garden Tour netted \$5,724. The total checking and savings total is \$34,986. To date, \$3,465 have been paid out on grants in 2012.

Nominations Committee for next year MG Foundation Board: A nomination slate for next year Board was announced.

Chairman: Bob Grindeland

Co-Chair: Candice Gohn

Secretary: Jill Bacchieri

Treasurer: Sonja Henderson

Voting Board Members: Sharon Garrels and Diane Threikeld

Pat Aniotzbehere, Janet Mizuguchi, Mark Clark will finish their two-year terms of office.

Summer Picnic: 15 attended the picnic on the sunny shore of Lake Leland at the residence of Mike McFadden. Thank you Mike! A new person is needed to organize next year's picnic.

State Conference in Pasco: Jill Bacchieri arranged for a donation basket from the Food Co-op for the raffle at the State Conference in Pasco. Mark Clark took it to the conference as well as some MG inventory that will be for sale.

Yard & Garden Series 2013: The Y&G series will be held at the Jefferson County Fairgrounds next year.

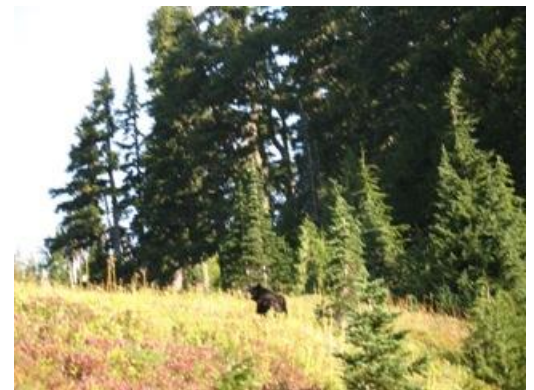
Grant Deadline: Shirley Williams announced that the next deadline for MG grants is October 1.

Meeting adjourned at 4:30.

Respectively submitted by Linda Pfafman, secretary 9-14-12



*Left:
Blueberry
bushes
turning
color with
the fall
season.
Submitted
by
Mike
Mc Fadden*



*Above: A bear as he strolls slowly up the hill
on Mt Rainier. Submitted by Sarah Fairbank*

Schedule of Events

October 2012



Oct 4– Board mtg 3 pm WSU/Madrona room

Oct 11– Foundation meeting

For all other items, activities and events, please see Misc Items on page 6

MG Board Meeting - First Thurs of each month; 3:00 pm, WSU/Madrona room

MG General Foundation Meeting - Second Thurs of each month, 3-5pm, Tri-Area Comm. Center.

WSU Plant Clinic– Is closed for the year.

Co-op Plant Clinic– Is closed for the year.

Chimacum Plant Clinic–Is closed for the year.

Do you have an item for the Calendar/Schedule of Events? Please submit to the editor at alibruce113@yahoo.com, or call Ali at **360-732-0433**. Committee chairs, please submit dates, times and locations of your meetings.

Newsletter Deadline: **20th** of the month.

Sun	Mon	Tue	Wed	Thu	Fri	Sat
	1	2	3	4 <i>Board Mtg 3 - 5 pm</i>	5	6
7	8	9	10	11 <i>Foundation Mtg 3-5 pm</i>	12	13
14	15	16	17	18	19	20
21	22	23	24	25		27
28	29	30	31 <i>Halloween</i>			



WSU Jefferson County Learning Center
201 West Patison
Port Hadlock WA 98339



Master Gardener Foundation

