



MASTER GARDENERS JEFFERSON COUNTY

© Cynthia Elmore 2001

NEWSLETTER

November 2012

2013 JCMGF Board Nominees



This November at the monthly general meeting, we will be having our Executive Board Election. Listed below are the Master Gardeners who have stepped forward and volunteered to run a position.

**Bob Grindeland –
Chairperson
(One year term)**

**Candice Gohn –
Co-Chairperson
(One year term)**

**Jill Bacchieri –
Secretary
(One year Term)**

**Sonja Henderson –
Treasurer
(One year term)**

**Sharon Garrels –
Board Position
(Two year term)**

**Diane Threlkeld –
Board Position
(Two year term)**

**Janet Mizuguchi – Board Position
(One year term)**

Inside this issue

<i>From the Chair; SGT Update</i>	2
<i>Fall Programs</i>	3
<i>Holiday Party Notice; Membership News</i>	4
<i>Grants Update</i>	5, 6
<i>Garden Column Request</i>	6
<i>Pollinator Course</i>	7
<i>Name that Plant</i>	8
<i>Olympic Fiber Co-op</i>	9
<i>Misc Tidbits; Reading Room</i>	10
<i>Kitchen Korner</i>	11
<i>Answers to Name that Plant</i>	12
<i>Photo Gallery</i>	13
<i>JCMG Oct Board Minutes</i>	14
<i>JCMG Oct Foundation Minutes (Draft)</i>	15
<i>Calendar</i>	16

I hope all of you will make an effort to attending this November Monthly meeting and will vote in this up-coming election. Nominations from the floor will also be welcomed for any of the above listed position during this process.

Hope to see all of you there to partake in this important event in the Master Gardeners Foundation operations.



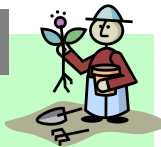
Submitted by: Janet Miziguchi and The Nominations Committee



Eggplant parmigiana basket submitted by: Kris Burns



Chair's Eye View of the (Master) Garden



Well I guess that lovely Indian Summer is over. Time to clean up, but not too much. Leave some stuff for the Towhees to scratch up in their quest for bugs and to protect the soil from winter rains. Have you remembered to shut off your irrigation systems? As usual I didn't get ground covers planted in time, so I have been covering bare soil with compost.

I hope to see all of you at our November 8th Foundation Meeting. Remember, this is our Annual Meeting and Election. The Nominating Committee has done a fine job of filling out a slate of officers and board members. This is your chance to show them your support.

We also have another presentation which should be of interest to all of us interested in our local environment and quality of life. Sarah Spaeth will be talking about The Jefferson Land Trust. The Trust has been a real boon to our County, saving lands from development, helping in the restoration of salmon and wildlife habitat, and supporting local farms.

See you on the 8th, Roger McPherson

Secret Garden Tour



I'm the co-chair of the secret garden tour, and we still need two more gardens for the 2013 tour. Ideally we are looking in the vicinity of Parkridge, Woodland Dr, or Kala point. If anyone knows of an interesting garden please have them contact me at akfishwoman@hotmail.com or 907-942-7563.

Also many volunteer positions are available if members are interested in helping organize the Secret Garden Tour!

Submitted by: Deb Darminio



Extension Staff

Phone: (360) 379-5610

Dr. Laura Lewis, ext. 202
WSU Extension Chair
Master Gardener Program Coordinator

Sally Chapin, ext. 200
Receptionist/Office Assistant

JCMG Foundation Executive Board 2012

Chairperson

Roger McPherson (360) 385-0175
roger76@olympus.net

Co-Chairperson

Janet Mizuguchi (360) 437-8128
jarjsm@msn.com

Secretary

Linda Pfafman (360) 379-1782
lindapfafman@gmail.com

Treasurer

Phil Meany (360) 385-7363
pmeany245@q.com

Board Members:

Pat Aniotzbehere (360) 385-1415
mzmouse82@q.com

Mark Clark (360) 379-4845
sonomarko@yahoo.com

Ali Dyche (360) 732-0433
alibruce113@yahoo.com

Mike McFadden (360) 765-3312
lelandlakehouse@wildblue.net

Marian Meany (360) 385-7363
meany501@olympus.net

MG Coordinator:

Sarah Fairbank (360) 385-2346
sarah@olympus.net

MG Foundation of WA State Rep:

Mark Clark (360) 379-4845
sonomarko@yahoo.com

M.G. NEWSLETTER

Do you have an idea for an article in the newsletter? A book review, a favorite recipe or perhaps an upcoming gardening event? Do you chair an MG committee? Please submit all items for publication to Ali Dyche at 360-732-0433 or via email at alibruce113@yahoo.com, by the 20th of the month. Thank you!



Foundation Meeting Fall Schedule 2012

Tri Area Community Center,
10 W Valley Rd
Chimacum
3pm-5pm

Sarah Spaeth- Jefferson Land Trust-

November 8th, 2012

Land Trust Farmland Conservation

Sarah Spaeth, Executive Director, Jefferson Land Trust.

Sarah will talk about the working lands and working forests aspects of Jefferson Land Trust's mission.



Jefferson Land Trust is a private, non-profit organization that works with cooperation and wiliness of landowners to preserve habitat, working lands, farms and forest forever in Jefferson County. JLT was founded in 1989. It is currently staffed with 5.2 FTE. The land trust works with numerous organizations to preserve land. Land trust works in several ways to accomplish this objective. One is by legal means of placing conservation easements on lands.

Sarah Spaeth has held this Executive Director position since 2010, and she has worked for the Land Trust since 1995-1996. Background in Marine Biology, Sarah is an extremely accomplished person according to several key stakeholders in the community, especially Barbara Arnn.

Sarah was originally hired as a project coordinator in 1996 for what was then called the North Quimper Peninsula Wildlife Corridor. Sarah combines her role as executive director with that of conservation director, managing the work that is at the core of the Land Trust mission—our land projects. She works closely with land owners and community members, as well as governmental and non-profit agencies to shepherd all of our land projects through to protection.
(from Land Trust Website)

December brings our Annual Holiday Party. This will be our monthly Foundation meeting. Sharon Commander submitted party information which can be found on page 4.



Fallen Redbud leaves submitted by: Kris Burns.



Autumn crocuses submitted by:
Erica Iseminger.

Master Gardener Annual Holiday Party



Mark your calendar for Saturday December 8th, 2012 for the annual Holiday party. The event will be held at the Port Ludlow Beach Club, 121 Mariner Drive, Port Ludlow. The festivities will begin at 2:00 pm. and end about 5:00 pm.

The Master Gardener Foundation will furnish the turkey, ham, coffee and tea. Please bring table settings and a side dish or dessert to share, and your choice of beverage.

Once again we will have our traditional "Yankee Swap," so find a "white elephant" or gardening item for about \$10. Each year we have a number of returning gifts. I wonder who will win the singing flowers, this year? A number of great door prizes will be offered. You must be present to win.

Please RSVP so that we know the number of tables to set up and the amount of food to purchase. Please call Sharon Commander 437-2486 or e-mail Sharon at cmdrs@cablespeed.com.

We hope to see all Master Gardeners and their spouses/partners at the Holiday Party. This is a fun event no one will want to miss!



MEMBERSHIP NEWS:

A big congratulations goes out to SONJA HENDERSON are our newest certified Master Gardener. HURRAH SONJA!!!



Also, another reminder to please report your hours before the end of the year. We will be honoring volunteers next spring who have worked hard in supporting our programs and we use reported hours to determine these honorees. So, keep up the great work and remember to submit your hours. Please let us know if you need assistance with this, we are glad to help.



Submitted by: Sarah Fairbanks - sarah@olympus.net, Pat Aniotzbehere - mzmouse82@q.com and Kathy Ryan - ronkatr@msn.com



Images of fungi
in the woods
submitted by:
Erica Iseminger



Grants/Scholarship Committee News



This fall, the community sent us 10 fabulous applications for us to consider. The decision was really difficult as all the ideas were both interesting and worthy. We would love to fund them all. However, we also wanted to pick those ideas we felt would enhance our community in either spreading the word through an educational process, assisting multiple residents in environmentally sustainable gardening projects or other great projects that are innovative and compatible with our Master Gardener Foundation objectives. We look closely at budgets, timelines and evaluation strategies. We do site visits and interviews as a part of the application process. Our goals in these visits and interviews are to assess the progress a person or group has made so far on the project in question or successful past projects. We also want to know the volunteer manpower and other resources to carry out and sustain the project. Some projects don't turn out as expected, but we all learn as much from failures as successes. Our fall selection will be announced in the December newsletter.

As in previous newsletters, we shared pictures from past projects we have funded. Here are two more:

Swan School Greenhouse Window Project: In the spring of 2010, we helped fund a greenhouse window for this elementary school. One of the school's goals is to have project-based learning with a focus on community involvement. The school is able to cultivate some garden space in the community garden next door and raise vegetables for their school's use and the food bank. This spring the school grew 2000 vegetable starts from their greenhouse window and a grow light to distribute to the persons utilizing the food bank.



Grants/Scholarship Committee News Cont.

Jefferson County Historical Society for the Rothschild House's New Lavender Garden, Washington's smallest state park at the corner of Taylor and Franklin, Port Townsend:

This spring we funded the Historical Society's lavender garden. The roses previously in this garden were ravaged by time and the deer, so they took them out and planted this fragrant lavender garden. Lavender is drought tolerant, deer resistant and consistent with the type of plant that would be found in a Victorian garden. The plantings are small now, but in time, they will be able to harvest the lavender, sell it in the house and help support the garden.



The plantings are small now, but in time, they will be able to harvest the lavender, sell it in the house and help support the garden.

Shirley Williams, Chairperson

THE GARDEN COLUMN

This is an excellent opportunity to volunteer for Jefferson County Master Gardeners and it has nothing to do with playing in the dirt. If you are interested in writing and have experience meeting fairly strict deadlines, this is the job for you.



The Garden Column is a weekly 350 word article on any part of gardening that might be of interest to the readers of The Leader (not just Master Gardeners). It is a serious commitment not to be taken lightly, as it is generously sponsored by Henery's Garden Center, who pays a fair amount of money to have these articles included in an advertisement every week.

The original intent of the garden column was to recruit MG members to help write the column, which is a lofty goal, and for me, the most challenging part of the job. If you are interesting in taking over this committee position, please contact me at christinalacie@earthlink.net or phone me at 385-1657.

However, if you are not interested in taking over the committee position, the column needs to continue, and I am guessing that the reading public could use a change in voice now and then. So if you have a garden specialty that you are passionate about and care to write a column on, please contact me as well. Just as the show must, the column must go on, and it will.



Submitted by: Christina Lacie; The Leader Garden Columnist



Don't miss your opportunity to attend!

POLLINATOR CONSERVATION IN AGRO-ECOSYSTEMS SHORT COURSE

Special Rate for Tilth Producers of Washington Annual Conference Participants

The Xerces Society for Invertebrate Conservation and the USDA Natural Resources Conservation Service (NRCS) are pleased to announce an upcoming Pollinator Conservation Short Course in Port Townsend, Washington.

This full day training will provide farmers and farm agency staff with the latest science-based approaches to reversing the trend of pollinator declines, and will equip you with strategies to protect and manage agro-ecosystems for these important insects.

Organic Producers:

The National Organic Program requires producers to maintain or improve natural resources including biodiversity. Pollinator conservation can provide a convenient framework for meeting biodiversity certification requirements while at the same time enhancing farm productivity.

SHORT COURSE DETAILS:

Detailed agenda and more Information:

Click here

to view a detailed agenda and find more information about this course.

Location:

Fort Worden State Park

200 Battery Way
Port Townsend, WA 98368

Date/Time:

November 8th, 2012 9 am to 4 pm PST

One day before the Tilth Producers of Washington Annual Conference

Cost:

\$50 Course Registration Fee

\$35 Discounted fee for attendees of Tilth Producers of Washington Annual Conference

Each participant will receive a pollinator conservation toolkit, including the comprehensive guide *Attracting Native Pollinators*

Registration:

Registration is required for this course, **click here** to register online.

Space is limited, register today!

Contact:

Ashley Minnerath
Pollinator Program Assistant
The Xerces Society for Invertebrate Conservation <mailto:shortcourses@xerces.org?subject=Washington%20Pollinator%20Conservation%20Short%20Course> or (855) 232-6639 ext. 102.

ACKNOWLEDGMENTS

This Pollinator Conservation Short Course is made possible with the support of the USDA Natural Resources Conservation Service (NRCS). Additional support for this training is provided by the following: the Cinco Foundation, CS Fund, Disney Worldwide Conservation Fund, Dudley Foundation, Turner Foundation, Whole Foods Market and their vendors, and Xerces Society members.

4-H NEEDS YOU!!!

Hello, hope you are doing well.

We are in need of more volunteers within 4-H in our county, especially with poultry, gardening, video making, cooking, sewing and archery.

Are you interested in working with youth? Do you know someone who might be interested?

I would appreciate a call or email if you do know someone. Families have been asking for these projects for their youth, and there aren't enough volunteers to help meet the need.

Thanks for caring....sue

Sue Hay
WSU Jefferson County Extension
4-H Coordinator
201 W. Patison
Port Hadlock, WA 98339
360-379-5610 ext 208
shay@jefferson.wsu.edu



NAME THAT PLANT



Name that Plant Answers on Page 12.

Submitted by: Ali Dyche

A photograph of three sheep in a lush green field. One sheep is in the foreground, looking towards the camera. Two other sheep are in the background, one on the left and one on the right, both looking towards the camera.

WASHINGTON STATE UNIVERSITY
JEFFERSON COUNTY EXTENSION

Olympic Fiber Cooperative

November 6th, 6-8pm

WSU JEFF. CO. EXTENSION, MADRONA ROOM

*INTERESTED IN PRODUCTION,
PROCESSING, AND SELLING OF
ANIMAL FIBER (SHEEP'S WOOL,
ALPACA ETC...) ON THE
OLYMPIC PENINSULA?*

JOIN THE CONVERSATION!

*COMMUNITY NEEDS, STRENGTHS
AND OPPORTUNITIES TO
EXPAND LOCALLY & REGIONAL
ECONOMIC MARKETS!*

*LET'S LEAD WASHINGTON STATE
IN FIBER PRODUCTION,
PROCESSING AND SALES BY
BEING A FIBER HUB!*

For more information: laura.lewis@wsu.edu

Miscellaneous Tidbits, Happenings and Items of Interest



—The North Olympic Fruit Club promotes the growing of fruits and nuts. They provide a wide range of useful information in their monthly programs which are offered free to the public. The club meets the first Tuesday of the month at the Tri-Area Community Center at 7 pm.



—The Olympic Peninsula Mycological Society is a group devoted to the knowledge of mushrooms, from harvesting wild species to home cultivation. Different topics are covered each month and programs are free to the public. OPMS covers the entire Olympic Peninsula, and thus meets alternating months at the Tri-Area Comm. Center and the Gardiner Comm. Center. Meeting nights are the second Wed of the month and meetings begin at 6:30 pm.



OCT IS TRI-AREA



—The Port Townsend Saturday Farmers Market, located on Tyler St in Uptown Pt Townsend, will be open for the 2012 growing season from Apr-Dec. Market hours are Apr-Oct from 9 am-2 pm and Nov-Dec from 10 am-2 pm.

—East Jefferson Bee Keepers are a group of bee enthusiasts that meet to share tips, ideas and experiences both good and bad on the matter of raising bees. Educational programs, to be announced as scheduled are free to the public. EJBees meets the second Tuesday of the month at the Jefferson Co Library at 6 pm.



If you have a misc tidbit, happening or item of interest that you would like posted on the bulletin board, please submit your item to Ali Dyche at alibruce113@yahoo.com by the 20th of the month.

READING ROOM

For those interested in learning more about year-round vegetable gardening, Eliot Coleman's "Four-Season Harvest" is an easy to understand, well laid out book for you.



This book will walk you through the year, planning the indoor and outdoor garden. Guiding you about seeds, soil health, organic gardening and much more.

Questions about cold frames or root cellars? This covers a lot of information on them. Looking into crop rotation and how to best facilitate it? You guessed it! It's in there.



The main focus though in this book, is how to garden under cover putting to use several different methods such as greenhouses, high houses (hoop houses) and cold frames.

Eliot and his wife Barbara live in Maine and eat fresh food year round using the methods in "Four-Season Harvest". That's saying something when you think about how cold the winters are there



Submitted by: Ali Dyche



Some of my favorite Thanksgiving side dishes are....

Roasted Garlic Mashed Potatoes

8 med-large potatoes
1 large head garlic
Salt and pepper to taste
Olive oil



Slice the top off of the head of garlic. Rub with olive oil and roast in a 200 degree oven. In the meantime, peel and boil the potatoes. Mash them as fine as you like them. The garlic should be ready. Gently squeeze the roasted garlic into the mashed potatoes stirring it in. Add a bit more olive oil for flavor, salt and pepper to taste and voila! Garlic mashed potatoes!

Roasted Beet Salad

1 bunch beets
1 lb spinach, chopped
1/4 lb feta, crumbled
Pine nuts or sunflower seeds
Balsamic vinegar



Trim the tops off of the beets. Boil until fork tender. Cool and peel. Chop the beets into 1/2" chunks, drizzle with olive oil and roast at 350 degrees for 20 minutes. Toss the spinach, feta and pine nuts or sunflower seeds. Beets may either be chilled after roasting for a cold salad, or added while still warm for a warm salad. Gently toss with vinegar and enjoy!

Baked Squash

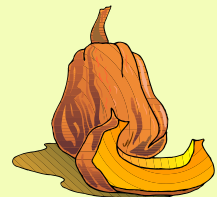
Winter squash sliced length-wise

Option 1.

Dot with butter and sprinkle with brown sugar. Bake at 350 until fork tender.

Option 2.

Drizzle with olive oil. Salt and pepper to taste (or other spice if preferred).



The local farms will be happy to help you with your veggie shopping lists as all items are in season currently! Happy Thanksgiving Everyone!!!

Submitted by: Ali Dyche

NAME THAT PLANT ANSWERS

Cyclamen



Common Name: Cyclamen

Botanical Name: *Cyclamen persicum* and *C. spp.* (*SICK-la-men* or *SYE-kla-men*)

Post Harvest Care:

- Flowers should be recut in air or under water and then placed in a hydration or bleach solution as sugar can reduce flower life. Or, try different flower food formulations to determine if one or more are beneficial.

Pulsing flowers (5 hours at 68F followed by 15 hours at 40F) with a 15% sugar + 30 ppm silver nitrate solution resulted in flower vase life that was doubled.

Harvest Instructions: Flowers should be harvested in the bud stage, namely, when they are showing color but still facing in a downward position.

Family Roots:

- Member of the Primulaceae (primrose) family.
- Native to Central Europe.

Common relatives include oxlip, primrose and purple loosestrife.

Personality:

- Flowers are solitary, at the ends of leafless stems. Petals are strongly reflexed. Leaves are kidney-shaped, thick and fleshy.

Availability: Mostly winter but to a certain degree year-round.

Flower Color: Pink, white, purple or red.

Storage Specifics: Can be stored at 33-35F for one week but if pulsed as described above, 3 weeks of storage is possible.

Tidbits:

- The specific epithet name "persicum" probably means of Persia. This ties in with one use of this plant as a Christmas plant in Germany.
- Cyclamen, from the Greek "kyklos" (circular), referring to the spiraling of the peduncle (flower stem) after flowering in some species.

Common Name: Cyclamen, Florists Cyclamen

Botanical Name: *Cyclamen persicum* and *C. spp.* (*SICK-la-men* or *SYE-kla-men*)

Decorative Life: About 3-5 weeks or more in flower. Once flowering stops, the plant can live for many months.

Harvest Instructions: Plugs can be stored for 5 weeks in the dark (6 weeks in light) at 36F and subsequently grown into very acceptable plants and/or flowers. Growing plants using 150 ppm nitrogen produced longer lasting plants after harvest than those grown using 200-300 ppm.

Family Roots:

- Member of the Primulaceae (primrose) family.
- Native to the Mediterranean and Central Europe.

Common relatives include purple loosestrife, primrose and oxlip.

Personality:

- Plant is classed as a dicotyledon, leaves not parallel veined.
- Flowers are solitary at the ends of leafless stems and the petals are strongly reflexed.

Leaves are kidney-shaped, thick and fleshy.

Availability: Mostly winter but year-round.

Flower Color: Pink, white, red and/or purple.

Storage Specifics: In one study, it did well if transported in 7 days or less at 40F. A second series of tests showed that it can be shipped at 34-68F for 4 days with no or little loss in postharvest life.



PHOTO GALLERY



Right: Fall blossoms submitted by: Erica Iseminger



Left: Fall in the blueberry fields submitted by: SpringRain Farm and Orchard

Below: Winter squash harvest submitted by: Erica Iseminger



Above: Fall on Lake Leland (see the Cooper's Hawk on the lawn?) submitted by: Mike McFadden



Left: Fall in the park on Water St. submitted by: Patricia Weedman

Right: Mt Shuksan, near Mt Baker submitted by: Patricia Weedman.



JCMGF October 2012 Board Meeting Minutes



JEFFERSON COUNTY MASTER GARDENER FOUNDATION BOARD MEETING MINUTES October 4, 2012

Members present: Voting members –Roger McPherson, Chairman; Janet Mizuguchi, Co-Chair; Phil Meany, Treasurer; Linda Pfafman, Secretary; Board Members –Mark Clark, Mike McFadden, Pat Aniotzbehere, Marian Meany. Non-voting member – Jill Bacchieri. WSU JC Extension – MG Coordinator – Sarah Fairbank.

Call to order: The meeting was called to order by Janet Mizuguchi, Co-Chair at 3:00 PM.

Quorum: Eight of the nine voting board members were present.

August 2, 2012 Master Gardener Foundation Board Meeting Minutes: The August MG Foundation Board meeting minutes were approved by quorum of votes through e-mails.

There was a short discussion regarding the need to approve the MG Foundation Meeting minutes by the MGF membership during the general meeting. A draft of the minutes will appear in the newsletter and corrections can be taken before the approval vote at the following general meeting.

Treasurer's Report: Phil Meany, treasurer, reported that the MG Foundation had a bank balance of \$ 34,951.93 on 10/4/12. He has asked committee chairmen to submit their 2013 budgets and hopes that he will have the 2013 budget mostly completed by December 31, 2012. He stated that MGF pays \$320/year insurance for \$1 million to cover liability for MGF events and he was quoted the figure of \$468/ year to purchase D & O insurance (\$1 million) if the board decides to purchase it. Mark Clark asked about D & O insurance at the MG Foundation State meeting in Pasco and found that some counties have purchased it. Great Northern Insurance handles the D & O policy for the Kitsap MGF organization. Mark moved to continue investigating whether or not JCMGF should purchase such insurance. Linda seconded and the motion was passed by a unanimous voice vote.

MG State Meetings: Mark reported on the September MGF State meeting in Pasco. He said that there were lots of good sessions. Next year the State MG Foundation conference will be in Everett. Mark has submitted an article on the conference for the October newsletter. He reported that the MGF Market Place was profitable and that the raffle basket from the PT Food Coop was well received. The gross proceeds of MG items from Jefferson County were \$1,101.95 and the net was \$1,010.95 (there was a 1% handling fee). Roger moved to reserve two tables at next year's State MGF Conference in Everett. Pat seconded the motion and there was unanimous approval.

Three action items: Janet will ask Susan McMahon if she wants to continue ordering merchandise for next year. Linda will find out more about the garden prayer flags. Mark will reserve two tables.

Nominations Committee Update: Hugh Musser is on vacation. All elected positions have candidates. According to the old by-laws, five directors were elected for two years – 2 in odd years and 3 in even years and there was a limitation of two consecutive terms for elected officers. These points are in the existing Articles of Incorporation and are not duplicated in the new by-laws.

Action item: Roger will send the nominations slate to Ali for newsletter.

Membership committee: Pat reported that there are only two interns from 2010 who haven't completed their hours yet.

Yard and Garden Committee: Sarah reported that the Yard & Garden committee wants to get the brochure ready by October 15 but that they have not signed all of the speakers yet. They are hoping to get Graham Kerr, the Galloping Gourmet, as one of the speakers.

Two action items: Sarah will talk with Ali about getting an assistant to help with the newsletter and Roger will talk with Diane Threlkeld and Susan Cronshaw regarding taking over the leadership of the Yard and Garden Series.

Northwest Permaculture Convergence: Marian moved to decline the offer to provide sponsorship for the Northwest Permaculture Convergence that is scheduled for October 5-7, 2012 at Fort Flagler because of the late request. Phil seconded the motion and it was passed unanimously. Sponsorship levels ranged from \$150 - \$750.

MG Training 2013: Sarah reported that 33 have shown interest in the next MG training. WSU is searching for a different class location. They would like to limit the class to between 20 -22 students. No one has applied yet.

Plant Clinics: A meeting for a wrap up of the plant clinics will be held on October 5th at Sarah's house.

Coordinator's report: Sarah reported that there will be two mandatory on-line trainings for all Master Gardener volunteers: one on sexual harassment and the other on identifying abuse in populations of elderly, disabled, and youth. Toni Fitzgerald is working to get these trainings on the website. One session at the conference dealt with the use of social media (Facebook) to get more public exposure of local MG programs. Toni expressed concern about keeping consistent use of WSU MG branding.

Toni has announced that she will be leaving in June 2013 and Brigetta, her assistant, will be leaving December 31, 2012.

Sarah reported that she learned at the coordinator conference in Spokane that WSU MG program is hoping to get microscope cameras for use at all plant clinics by next year.

An international MG conference is scheduled for September 7-8, 2013 on a cruise out of Seattle.

The State MG conference will be on September 26-28, 2013 in Everett. This year 31 of the 35 counties attended the MGF conference plus a delegation from Korea. All were invited to a MG conference to be held in 2014 in Korea.

There was some confusion about reimbursement rate for September travel expenses for Sarah and Mark. Janet moved to change the travel reimbursement as per the JC MG F handbook to reflect the rates published for Washington State travel (mileage and hotel expenses by county). Roger seconded the motion and the vote reflected unanimous approval.

Two action items: Linda will send a link to the treasurer for the travel rates set by Washington State and Mark will write a dated amendment for travel rates for the Handbook.

Adjournment: Janet adjourned the meeting at 4:50PM.

Respectfully submitted by Linda Pfafman, Secretary

JCMGF October 2012 Foundation Meeting Minutes



JEFFERSON COUNTY MASTER GARDENER FOUNDATION GENERAL MEETING REPORT/ MINUTES (Draft upon approval) October 11, 2012

MG General Meeting:

30 people attended the meeting at the Tri-Area Community Center.

Presentation:

The guest speaker was Lois Twelves, who spoke about apple history and culture and changes in the world of apples. She grew up in Wenatchee in an apple orchard. Her college education is in biology and zoology.

Meeting:

Roger McPherson chaired the meeting following the presentation and a short break. In the future, a draft of the Foundation minutes will be published in the newsletter and an approval vote will be taken at the following meeting.

Treasurer's Report:

Phil Meany, treasurer, said that there's "not much financial activity". The balance is now \$34,950; Mark Clark sold old inventory to the state conference and brought back \$1,010. Next year's conference is in Everett.

Nominations Committee for next year MG Foundation Board:

Annual elections will be held during the November Foundation meeting. A full slate of candidates will be published in the newsletter and nominations for office will be accepted from the floor.

Membership:

No updates

Yard & Garden Series 2013:

Sarah Fairbank announced that she and Nancy Villagran will be taking over. Sherine Murphy and Susan Cronshaw are getting volunteers. Two speakers are confirmed and five other are in the works. The Galloping Gourmet chef, Graham Kerr, might do one of the sessions. Roger noted that we need help with getting speakers. The goal was to have them finalized by October 15 so that the brochure can be printed.

Coordinator Update:

Sarah Fairbank said that 33 people have expressed interest in the 2013 MG training. Four applications are in. Diana Lukland is assisting. Some people have expressed interest in helping with MG training so they should expect an email soon.

43 people have expressed an interest in working at Yard and Garden.

Sarah also mentioned that there was a plant clinic follow-up meeting and that it was decided that plant clinic would continue as every week at WSU office but would alternate every four weeks between the Port Townsend Food Co-op, the Chimacum Corner Store, and in Quilcene. A plant clinic will be held one weekend a month in Forks. The plan for plant clinics has not yet been finalized.

Sarah recommends the book, "The Pacific NW Gardener's Book of Lists". She will be getting a copy for plant clinic and also wants one for each MG class.

Additional Updates from Sarah:

Sarah said that the Twin Vista Ranch donation is complete. There are 33 acres. The plan right now is that it will be an incubator farm and have some fruit research in conjunction with Mt. Vernon.

Toni is retiring at end of year. Her position will probably be filled but we don't know yet.

A house bill was passed that all staff and volunteers from WSU take a 10-15 minute on-line training on identifying people at risk for abuse (children, elderly, etc).

Round of applause was given to Sherine for checking plant clinic machine every day.

Meeting adjourned at 4:30.

Respectively submitted by Jill Bacchieri 10-14-12.

Schedule of Events



November 2012

Oct 4– Board mtg 3 pm WSU/Madrona room

Oct 11– Foundation meeting

For all other items, activities and events, please see Misc Items on page 6

MG Board Meeting - First Thurs of each month; 3:00 pm, WSU/Madrona room

MG General Foundation Meeting - Second Thurs of each month, 3-5pm, Tri-Area Comm. Center.

2012 Plant Clinics are closed.

Do you have an item for the Calendar/Schedule of Events? Please submit to the editor at alibruce113@yahoo.com, or call Ali at **360-732-0433**. Committee chairs, please submit dates, times and locations of your meetings.

Newsletter Deadline: 20th of the month.

Sun	Mon	Tue	Wed	Thu	Fri	Sat
				1 Board Mtg 3 - 5 pm	2	3
4	5	6 	7	8 Foundation Mtg 3-5 pm Pollinator class 9-4	9	10
11	12	13 	14	15	16	17
18	19	20 	21	22 Thanksgiving 	23	24
25 	26	27	28 	29	30	



WSU Jefferson County Learning Center
201 West Patison
Port Hadlock WA 98339



Master Gardener Foundation

