



# MASTER GARDENERS JEFFERSON COUNTY

## NEWSLETTER

© Cynthia Emore 2001

### JCMGF 2011 CLASS GRADUATION !!!

May 2011

Please come and celebrate with us the graduation potluck for our 2011 Master Gardener Trainees!

The festivities commence at noon on Thursday, May 26th in the Spruce Room. We are asking Veterans to please bring a dish to share, coffee/tea will be provided. If you are able to, kindly bring plates and flatware to ease environmental impact but such items will be made available for use.



We look forward to having a chance to meet and mingle with our new group of Trainees and food is such a wonderful medium for that! See you there!

Submitted by: Sarah Fairbank, Training Co-Chair

### Beautiful examples of Spring in bloom



Primrose and daffodil  
photos submitted by:  
Patricia Weedman



Joan Wilder's yard taken  
from Phyllis Wurscher's  
yard. Photo submitted by:  
Phyllis Wurscher.

#### Inside this issue:

2011 Trainee Graduation	1
May Foundation Program	2
Plant Clinic Update	2
CHS Plant Sale	3
<b>Chair's Eye View</b>	3
Raising Chickens-Q. Grange	3
Bokashi Composting—NOFC	4
Chick Program	4
Miscellaneous Items	5
Name that Plant	5
Mary Robson Park Update	6
Book Review; Plants offered; Chimacum Woods	6
Raising Chickens; Gardening Tips; Kitchen Korner	7
Plant Clinic Notes	8
JCMG Board Minutes	9
JCMG Foundation Minutes	10
Calendar	11

#### Nordland Garden Club 2011 Plant Sale

Nordland Garden Club  
**will be holding it's 2011**  
Plant Sale on Saturday,  
April 30th. The sale is  
from 9:00 am until 1:00  
pm at the Nordland  
Garden Club, located  
on Garden Club Road,  
Marrowstone Island.  
Rhodies, perennials,  
garden art and more  
will be on display!

WASHINGTON STATE UNIVERSITY



JEFFERSON COUNTY EXTENSION

Master Gardener Foundation

Cooperative Extension programs and policies are consistent with federal and state laws and regulations on nondiscrimination regarding race, color, gender, national origin, religion, age, disability, and sexual orientation. Evidence of noncompliance may be reported through your local Cooperative Extension office.

## May Foundation Program



For our May program we welcome local chef extraordinaire, Aaron Stark. He will be giving a two hour cooking demonstration on local and seasonal foods. The presentation takes place in the Spruce Room beginning promptly at 3:00 pm. Spouses are welcome to come.

Since Chef Stark's presentation will be from 3-5 pm, we will conduct our monthly business meeting at 2:00 pm, also in the Spruce Room. Many thanks to Sharon Commander for setting this up for us.

A plant exchange will take the place of June's program. Bring plants to trade, ask questions about, find out who has what you covet, compare growth patterns and more.

We are still in need of a Program Chair. If you are interested or have questions regarding the specific duties, please contact Roger McPherson.

*Submitted by: Ali Dyche*

## Plant Clinic Update

April at the Co-op Plant Clinic was much like March. We had 5-6 questions per week, with most of a general nature; how to plant dahlias, what seeds produce well here, what are the best varieties of tomato for Jefferson County, how can I get more of the "good bugs" into my garden, what is this plant?



Gardeners are anxious for warmer, drier weather. It's been too wet and/or cold for many to take a serious look at their gardens. Closer examination and some in ground planting should elicit some specific questions on germination, diseases and bugs.



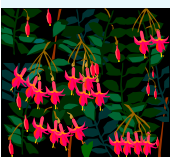
*Submitted by: Barb Smith, Plant Clinic Co-Chair*

## CHS Horticulture Class Annual Plant Sale

Just in time for Mother's Day, the CHS Horticulture Class will be holding their annual plant sale on Friday, May 6th from 2:20-4:00 pm at the CHS greenhouse.

Browse our lovely selection of fuchsia baskets, bedding plants and more! Come see what the kids have been doing!

*Submitted by: Tom Furseth, CHS Horticulture Teacher*



### *Extension Staff*

Phone: (360) 379-5610

Pamela Roberts, ext. 207  
*WSU Extension Chair*  
*MG Program Coordinator*

Sally Chapin, ext. 200  
*Receptionist/Office Assistant*

*JCMG Foundation Executive*  
*Board 2011*

*Chairperson*  
Roger McPherson (360) 385-0175  
[mcp@olympus.net](mailto:mcp@olympus.net)

*Co-Chairperson*  
Janet Mizuguchi (360) 437-8128  
[rarjsm@msn.com](mailto:rarjsm@msn.com)

*Secretary*  
Ora Hickman (360) 732-5021  
[hickmans@tscnet.com](mailto:hickmans@tscnet.com)

*Treasurer*  
Kathi Boyker (360) 765-4717  
[kboyker@mindspring.com](mailto:kboyker@mindspring.com)

*Board Members*  
Ali Dyche (360) 732-0433  
[alibruce113@yahoo.com](mailto:alibruce113@yahoo.com)

Mark Clark (360) 379-4845  
[sonomarko@yahoo.com](mailto:sonomarko@yahoo.com)

Mike McFadden (360) 765-3312  
[lelandlakehouse@wildblue.net](mailto:lelandlakehouse@wildblue.net)

Marian Meany (360) 385-7363  
[meany501@olympus.net](mailto:meany501@olympus.net)

Hugh Musser (360) 390-4567  
[hughmusser@cablespeed.com](mailto:hughmusser@cablespeed.com)

*MG Foundation of WA State:*  
*State Rep:* Mark Clark  
(360) 379-4845  
[sonomarko@yahoo.com](mailto:sonomarko@yahoo.com)

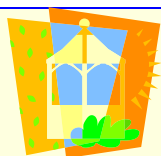
## CHAIR'S EYE VIEW OF THE (MASTER) GARDEN



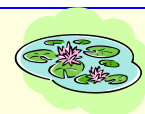
As I sit here today, it really does look like Spring may be trying to stick her head out from the clouds. The Seattle Times declares that this is the coldest April on record. It seems to me that the claim ought to extend from January 1st onward and include wettest also. Did your pea seeds rot in the ground as most of mine did? At any rate, I have good start of peppers and tomatoes I the greenhouse. Kris Burns also has excess starts which she will be bringing to the May meeting. If you can, bring some of your **own for trading or to pass on to your fellow MGs who don't have a place to get starts going.**

The May meeting should be a winner with Aaron Stark giving us a cooking lesson on how to use your **garden's bounty in the kitchen.** If you recall his last presentation, you probably remember many of the things you learned and tastings you enjoyed. I know I started growing and eating some different vegetables after his last talk. I also got much more interested in cooking, so you might want to bring your spouse.

*Submitted by: Roger McPherson, JCMGF Chair*



## Secret Garden Tour Update



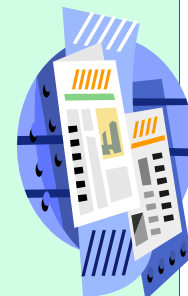
At the May Foundation Meeting posters and a sign-up sheet of poster hanging locations will be handed out. Please try to get your handful put up as close to May 21st as possible. Most establishments have a strict limit of 30 days to display posters for events. Tour tickets will go on sale May 21st at local nurseries and added this year are Whitney Gardens in Brinnon and Savage Plants in Kingston. A quick reminder if you are volunteering on tour day, you and your significant other are invited to attend the pre-tour on the morning of June 11th. If you live in South Jefferson County you will need to meet at 9:30 at the water tower at the junction of Coyle and Thorndyke Roads. We will form carpools and head to garden #1. For everyone coming from Ludlow, Chimacum, Hadlock and PT, please meet at the Olympic Peninsula Gateway Visitor Center located at the junction of Hwy 104 and Hwy 19 (Beaver Valley Road) at 9:30. You will form carpools and head to garden #1. We will not be visiting the gardens in order this year. Carpooling as a caravan will be a must due to locked gates at most of the gardens. If you have already signed up to volunteer, thank you for your support!! This is going to be a fabulous Secret Garden Tour on the beautiful Toandos Peninsula!



*Submitted by: Kris Burns, SGT Chair*

## M.G. NEWSLETTER

Do you have an idea for an article in the newsletter? Perhaps a book review, gardening tip, event, photos, recipe etc? Do you chair a committee? Please submit all items, or events that should be included, to A li Dyche via e-mail at [alibruce113@yahoo.com](mailto:alibruce113@yahoo.com), or call A li at 360-732-0433, by the **25th** of the month. T hanks!



## Bokashi Composting with the Fruit Club

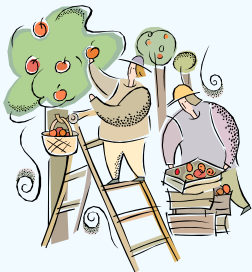


**Bokashi** in Japanese means fermented organic matter. It uses different kinds of microbes that thrive with no oxygen as opposed to conventional aerobic composting. The Bokashi process uses a set of micro-organisms to anaerobically ferment waste.

The fermentation process that breaks down the organic matter is fast, taking less than two **weeks and is odor free. It's the same process that gives us wine and pickles. You don't** have to worry about insects and smells. Bokashi systems can break down anything that is plant derived or organic, including yard waste, food scraps such as meat, fish, baked goods, dairy, fruits, vegetables and even pet waste. **What's wonderful is that it's easy and it's fast.**

Instead of tossed into the trash can, food that is left over or spoiled from plates, kitchens, cafeterias, restaurants, jails, schools, hotels and elsewhere can be fermented with Bokashi culture, mixed with dirt and put back in the ground where the microbes go to work. The enriched soil is ready for seeds or plants in a short period of time. Roses, shrubs, indoor plants, flowers of all types can thrive with Bokashi produced soil.

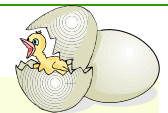
Dr. Lawrence Green is the founder of Bokashicycle. **He's a research scientist with more than 40 years experience in problem solving in the bioscience sector. As a physician and scientist, he's interested in finding quality solutions to common problems affecting our daily lives.** Like many others, Dr. Green has witnessed the disregard for precious land and resources and believes that we can improve the situation by applying good science and **common sense. He says it's possible to reduce** green house gas emissions and conserve water reserves far beyond current practice with relatively little effort and a reduction in costs.



**Dr. Green will be the North Olympic Fruit Club's guest speaker at 7 pm on Tuesday, May 3rd, at Tri Area Community Center. Master Gardeners are cordially invited. Refreshments will be served.**

*Submitted by: Judi Stewart, NOFC Chair*

## With a chick-chick here and a chick-CHICK THERE.....



On 11 April, David Self and Sharon Garrels set up the incubator for the Chimacum Kindergarten classes. A briefing was given to the classes as a group to explain the process of hatching a chick from an egg. A chart was provided for each of the classes which has a picture of a chick on a daily basis until it hatches after being in the incubator or in a nest with a hen for 21 days. Twelve eggs were placed in the incubator and the temperature was brought up to 99.5 degrees. The incubator was monitored to ensure the temperature would remain at the 99.5 degrees and then left in the care of the teachers to ensure the water level in the incubator was maintained for proper humidity. David checked the incubator on April 14 and it was functioning properly. A weekly check of the incubator will be accomplished to ensure it is still functioning properly. On 29 April, the turner in the incubator will be removed and the eggs placed on a cloth. The chicks will then position themselves properly for the great event and start emerging on May 2 which is the chicks hatching date. Hatching could be on 1, 2, or 3 of May, depending on varying conditions. We are hoping for a 100% hatch rate but that would be unusual.



*Submitted by: David Self, Chick Program Chair*



## Miscellaneous tidbits, information & ongoing meetings



—As of April 6th, our MG article for the Leader will be published every week instead of every other week. There are several options to choose from. Write the article (350 words), offer an idea, or receive help in the writing of one. For more information, please contact Diane Threlkeld at [diane\\_threlkeld@yahoo.com](mailto:diane_threlkeld@yahoo.com) or 379-1172.

—The North Olympic Fruit Club, a chapter of Western Cascade Fruit Society, is a non-profit, educational organization of home orchardists and fruit culture hobbyists. They meet the first Tuesday of every month, 7:00 pm at the Tri-Area Community Center.



—The Chimacum High School Horticulture Class will be holding a plant sale on Friday, May 6th from 2:20– 4:00 pm at the CHS greenhouse. Please come and show your support for our young horticulturalists!

—The Olympic Peninsula Mycological Society meets this month at the Gardiner Community Center. Doors open at 6:30 pm. The business meeting takes place at 7:00 pm, followed by our May program, "Practical info for the New Forager". Refreshments will be served.



—The Chimacum Farmer's Market will open for the 2011 season on Sunday, May 15th. This will be the market's second year at Chimacum Corner. Market hours are 10:00 am until 2:00 pm. Rain or shine, come have a good time!

—East Jefferson Beekeepers meet on the second Saturday of the month at the Jefferson County Library. Come share your experience, ask questions, sit in on the monthly program, or all of the above.. Refreshments will be served.



### Name that Plant

1.



3.



2.



*Submitted by: Ali Dyche*

## Mary Robson Park Update



With the help of Betty Petrie, Dorothy Rath, Erica Iseminger, Susan Yadon, Kathy Grace and Danna Owens, the Spring work in the Park is almost done. We've had some plant loss and some plants look really bad, like the Rockrose. We may have to replace them with something less "sprawly". We will also divide some of the dahlias. They are coming in, but really slowly compared to last year. We are hoping to finish the work within the next few weeks. Irrigation is the next big project and that will need to be completed before the first heat spell—if one ever comes. The Aubriety and Arabis look great this year and the tulips and daffodils are a great compliment. Thanks again to all who give of their time and loving care so generously to the Park.

*Submitted by: Judith Johnson, Mary Robson Park Chair*

### Plants in need of a home



CAMPANULA GLAMORATA  
MONARDA  
HELLEBORES  
ASTERS  
ALCEMILLA MOLIS (Ladies Mantle)  
LAMIUM MACULATUM AUREUM  
FORSYTHIA  
AJUGA REPTANS  
YARROW (Moonbeam and Dk Pink)

If you are interested in any of these, please contact Judith Johnson at 437-8049.

### Chimacum Woods, open for touring...



Chimacum Woods, a species rhododendron garden, will open their gardens to the public on the following dates: Saturday and Sunday, May 14 & 15 and Saturdays, June 11 & 18 from 10:00 am until 5:00 pm.

Take a tour of the five-acre woodland rhododendron garden and propagation areas or stroll around on your own. The garden is located at 2722 Thorndyke Road, Port Ludlow (a few miles from the Hood Canal Bridge on the Olympic Peninsula). For more information, call 206-383-2713 or go to [www.CHIMACUMWOODS.com](http://www.CHIMACUMWOODS.com).

*Submitted by: Diane Threlkeld*

## The Book Stops Here



The Xerces Society has put together a new guide, **"Attracting Native Pollinators"**. **This book focuses on protecting North America's pollinators.**

It has a wealth of information on native pollinators, their range, mating habits, nesting habits, preferred flowers, reduced land impact, urban gardens and more. It also includes other types of pollinators such as flies, beetles and birds.

The photos are spectacular! Oodles of clear and colorful, they make it very easy to study the subject. Pt Townsend Library owns a copy.



*Submitted by: Ali Dyche*

## Answers to Name that Plant

1. Artemisia

2. Yarrow

3. Phlox



## Raising Chickens in Your Back Yard-From I aid egg to I aying or meat birds

On **Monday May 2nd**, Quimper Grange, presents a talk by chicken breeder, Jean Ball, who will share her experience raising chicks, egg laying hens and meat birds including turkeys. She will cover the basic requirements for raising happy, healthy birds including breed selection, breeding practices, feeding, watering, housing, health issues, predator control, composting of manure and humane butchering. Not only will participants learn how to grow their own wholesome local protein, they will acquire an appreciation of the interesting and fun aspects of chicken personalities. Jean will bring an assortment of her chicks in several different breeds for demonstration and purchase. Those wishing to buy chicks should bring a small box for transport. Local carpenter Jeff Stoneman will also be on hand with a sample of his portable chicken houses during the 7pm social hour and after the presentation.

Jean Ball grew up on a farm in Vermont and has nearly always had chickens along with other critters. She raises meat sheep, fruits and vegetables, mushrooms and poultry on her small farm in Chimacum with her husband Ryan. Jean is a self-described chicken addict who raises several breeds each year and never tires of experimenting with new ones. Those planning to purchase and having questions about chicks or turkeys may contact Jean year around at [gnarleydogfarm@gmail.com](mailto:gnarleydogfarm@gmail.com). The program starts at 7:30 pm and is preceded by a potluck dessert/finger food social half-hour from 7pm to 7:30pm. Suggested donation: \$5-\$10. For information contact: Charlotte Goldman at 385-3455.



Submitted by: Charlotte Goldman

## Gardening tips, questions & general information: Save the Rhubarb!!!

A few years ago, our neighbor who loved rhubarb asked if she could get a little from our patch out front. Sure!, I said, and gave her permission just to come over and help herself. **Not terribly present every hour of the day (...) I entrusted the rhubarb to** The Universe. It has always been a thriving plant with gorgeous foliage. Some months later as I was walking by that part of the garden, I saw only a few little puny rhubarb leaves...

**My bad, not the neighbors.'** I should have said Pull a few stalks but leave most of them. **[ Don't assume anything. ]** Now, three years later, the rhubarb looks as if **it's** making a comeback. The lesson here is clear: a rhubarb plant has to have at least **some (I'd say over half) of it's foliage in order to produce enough chlorophyll** to feed the roots. Time for some rhubarb compote!



Submitted by: Susan Ambrosius



The Kitchen Korner—~~rcipies~~, how to's, local/~~seasonal~~ foods and more!

Rhubarb Compote—



Rhubarb— 5-6 stalks

Sugar — 3/4 c

Water— 2 Tbl

For best flavor, choose firm, bright red stalks that aren't too thick. (Thicker stalks are stringier.) Lop off the tops just where it pinches in (before the leaves begin), and trim the bottoms where the stalks were cut. Slice the rhubarb into 1 cm pieces. In a saucepan over medium heat, combine the rhubarb, sugar, and water. When the sugar is dissolved and the liquid is simmering, cover the pot and cook until the rhubarb is tender, 5-10 minutes depending on the size of the rhubarb. Cool and store in the refrigerator until needed.

Submitted by: Ali Dyché

## PLANT CLINIC NOTES

At a recent plant clinic, a client had left a small sample of greenish hay. She wrote that several horses in the same barn had excessive salivation (drooling) after eating this hay. She wondered whether the hay had been contaminated with toxic weeds, possibly toxic fungi, or maybe even herbicides.

We called the client and told her that we did not have the kind of laboratory equipment or knowledge that would be needed to determine the presence of a fungus or herbicide. We suggested she consult her veterinarian.

The client replied that she HAD talked to her vet, who informed her that he had seen other cases of this recently, but did not know the cause. She wanted us to identify a tiny plant with seed pods that was incorporated into the hay. The hope was that we might find a toxic weed that could have caused the horses' distress.

The dried plants were minute. Putting them under the dissecting microscope helped, but our fingers looked (and acted) like battering rams. We had to tape the samples down to keep from tiddly-winking them into space.

Finally, a very experienced eye peered through the scope (thanks, Sarah) and noted the seed pod to be a tiny inflated capsule with adherent green sepals and various numbers of miniscule seeds centered within. The plant's leaves were linear or lanceolate (the specimen was dried), opposite, and arose from swollen nodes. Could this be a member of the pink family (Caryophyllaceae)?

Research revealed that members of this family do, indeed, tend to have inflated seed capsules which open at the top. Their inflorescences tend to be cymes or thyrses. Many have basal leaves, which we did not see in our sample, and then sparse opposite leaves on long stems. Examples of members of this family are *Stellaria* (chickweed), *Arenaria* (sandwort), *Campion* or *Lychnis*, *Silene* (catchfly), *Saponaria* (soapwort), and *Dianthus* (sweet william).

We also learned that most members of this family contain saponins (as does alfalfa!), a substance with traditional uses as a soap substitute and fish stunner. Saponins have apparently been implicated in mouth problems in horses; specifically, one web source pointed to *Arenaria serpyllifolia* (thymeleaf sandwort) as a cause of "catarrhal stomatitis [inflammation of the inside of the mouth]" in horses. Another website said that ingestion of this same plant "causes profuse salivation in horses." Further web surfing revealed a picture of this plant, which was dwarfed by the thumb holding it!

Before we got too full of ourselves, though, we also discovered that hay that has clover in it can lead to "slobbers" in horses. The culprit is a fungus, *Rhizoctonia leguminicola*, which produces an alkaloid called slaframine, which stimulates the salivary glands and smooth muscles. The diseased clover often has black blotches on the leaves; hence the name "black patch." However, clover was not apparent in our specimen.

Upon further questioning, the client said the hay was apparently sourced from eastern Oregon. While web browsing revealed no reference to *Arenaria serpyllifolia* in Eastern Oregon, several species of *Silene* are found in that area, and some are considered to be livestock problems (*Silene noctiflora*/night flowering catchfly, and white campion/*Silene alba* or *Silene latifolia*). These are all larger plants; *Arenaria serpyllifolia* is the only one that fits the size description.

Did we have a diagnosis? Of course not. Veterinary medicine is not part of our job description. But we did have several clues, which we passed on to the client, with the caveat that these were ONLY clues, and that she should discuss them with her veterinarian.

What did we learn? Possibly that we need more magnification at the plant clinic! But also, that persistence (plus an experienced mentor) can lead to useful and often unexpected knowledge. And those of us who depend on Shank's Mare or our Subarus for transportation can now impress our horse-owning friends!

*Submitted by: Mary Anne Desfosses*



## JCMG Board Meeting

### Jefferson County Master Gardener Foundation Minutes of April 7, 2011

**Members present:** Roger McPherson, Chair; Janet Mizuguchi, Co-Chair; Ora Hickman, Secretary; Mike McFadden, Board Member; Marian Meany, Board Member and Hugh Musser, Board Member.



**Call to Order:** The meeting was called to order at 3:08 PM by Roger McPherson.

**Quorum:** A quorum was present.

**Minutes of the previous Board Meeting:** Minutes of the March 3, 2011 Board meeting were presented. Marian Meany made a motion to approve the minutes, seconded by Janet Mizuguchi and approved by unanimous voice vote.

**Treasurer's Report:** Kathi Boyker had sent her report by e-mail to the Board Members as to how much was spent in March and Income balance. Hugh Musser made a motion to approve the report, seconded by Mike McFadden and approved by unanimous voice vote.

#### **Committee Reports:**

**Habitat for Humanity:** Nancy Villegran reported three houses were finished. One was completed in November and was planted at that time. Two were completed in March. One has a fenced-in yard and required just shrubs. The other owner wanted a lawn, foundation shrubs and a path. Nancy has given this home owner instructions on how to plant a lawn and they have been provided with shrubs. She has given instructions on how to maintain plants to all of them. She has a \$200 per home budget provided by Habitat for Humanity and nurseries (4 Corners, Henery's and Far Reaches) have donated plants. There are less donations from Nurseries in the Spring.

**Secret Garden Tour:** Janet Mizuguchi said that it is coming along fine. There is quite a distance between the gardens, but it should not pose a problem. At one location, a shuttle will be arranged from a designated parking area. Signage will be posted. Car-pooling will be encouraged.

**Grants:** Application deadline is April 1<sup>st</sup>. There are 10 interesting ones so far. On April 17<sup>th</sup>, the committee will meet and send out decision letters no later than May 10<sup>th</sup> if they were accepted or denied.

#### **New Business:**

**Plant Clinic:** The Co-Op Plant Clinic requested they be allowed to purchase a computer Notebook. Ora Hickman motioned they be allowed to purchase it as it is within their budget, Hugh Musser seconded it and it was approved by unanimous voice vote.

**Chair Volunteers:** Discussion involved how to get volunteers to chair committees. One idea was to make personal calls to solicit participation. The Board requested a list of committees and Roger McPherson said he would send it out.

**Foundation Meeting Times:** It was decided to present to the membership that from May through September, meetings would be held from 7:00 – 9:00 PM and from October through April, 3:00 – 5:00 PM.

**Leader Column – Diane Threlkeld** needs columns for the Leader. Roger McPherson will bring it up at May's Foundation meeting.

**List Service:** There is a perception that perhaps the List Service is being overused and people are receiving unwanted information. Roger McPherson will bring this subject up at the next Foundation meeting and has also sent an e-mail to Pamela Roberts.

Intern extensions will be considered on a one-to-one basis.

Sarah Fairbanks and Barbara Smith are advising the Chimacum Farmer's market what to plant in an herb garden the Market wants to establish.

Marian Meany brought up a proposal presented by her husband to allow plant clinic hours, or a portion of them, to apply to fulfillment of the education hours requirement for Master Gardeners. Roger McPherson will forward this proposal to Pam Roberts for her approval/disapproval.

Hugh Musser reported that the Inventory he and Ora Hickman are conducting is on hold due to bad weather and injury to his hand.

**Adjournment:** The meeting was adjourned at 4:34 PM.

*Submitted by: Ora Hickman, JCMGF Secretary*

**Presentation:** Kees Kolff and Ali Dyche gave a fascinating and educational presentation regarding bees. They covered history of bees, types of bees and, in particular, the structure of honey bees. At the end of the presentation, Ali had copies of lists of plants/flowers that attract bees and butterflies.

**Meeting:** There were a total of 28 MGs attending this meeting and 5 visitors.

**Treasurer's Report:** There was no treasurer's report.

**Old Business:** Meeting times were discussed. Beginning June through September, general meetings will be held from 7:00 – 9:00 PM and from October through April, 3:00 – 5:00 PM. The Spruce Room was not available this May at the 7:00 - 9:00 PM time frame.

**New Business:** None

#### **Committee Reports:**

—Mary Robson Park: Judy Johnson said that next week she needed 4-5 volunteers to work at the park (Monday, Tuesday, Friday) for two hours. There is weeding to do and perennials to cut back.

—Habitat for Humanity: Roger McPherson said that Nancy Villegran has done a great job working with Habitat for Humanity. They build 3-4 houses a year. Nancy works with the home owners to find out what they are interested in as far as a landscape plan is concerned. She has a Habitat for Humanity budget of \$200 per home. Per a Habitat for Humanity program, she teaches the owners on maintenance of their newly planted gardens.

—Secret Garden Tour: The Pre-Tour is on June 11<sup>th</sup>, Saturday, at 9:45. Participants are to meet at the Visitor Center on Highway 19 to carpool. Next month, the posters will be ready and MGs will be asked to post them at various places.

—Program Coordinator and Speaker's Bureau Chair. Roger McPherson announced that we still need volunteers to fill these positions. The Board will be reviewing the committee list. Clara Mason said the June meeting will not have a speaker, but instead there will be a plant exchange. In May, the meeting will begin at 2:00 PM with Aaron Stark presenting a cooking class (change in time was at his request).

—Leader Column: Diane Threlkeld said that since the "Leader" articles are now being published every week, she needs columns. She will publish the titles of columns we have already published on the web page. Columns are 350 words and there is a lot of help available. Educational hours can be earned.

—Newsletter: Ali Dyche said that she is trying to incorporate a food corner using local food in the newsletter. She also wants articles for Plant ID.

—Grants Program: Shirley Williams said grant submittals were due on April 1<sup>st</sup> and they received 13 interesting ones. The Board has granted the board \$10,000 to spend and they intend to spend half of it in the Spring and the other half in the Fall. She said that the Gathering Place at Point Hudson was a recipient in the past for a greenhouse. They grow their own food in it and then have cooking classes. These are people with disabilities.

—Yard and Garden: Ali Dyche said she has confirmed that Cisco Morris will be a speaker at our next Yard and Garden series. His presentation will be held at the Fairgrounds in order to accommodate a larger crowd.

—Chick Program and Herbie the Seed Program: David Self said he has set up an incubator at Chimacum School. Sharon Garrele has begun the Herbie the Seed Program at local schools.

#### **Announcements:**

—Judy Johnson announced she has a variety of plants to give away. Come to her house with containers.

—Roger McPherson said there have been complaints about the List Service. Bottom line is you are either on the list or not. If you don't want to read something sent to you, use the "delete" button. See Sally if you want to opt out on being a part of the list service.

—Veteran MGs are invited to attend the Craig Cogger presentation on global warming, April 21<sup>st</sup> at 10:00 AM. Training will be held in the Spruce Room.

—Janet Mizuguchi announced that if you are interested in going on an East Coast Garden Tour with Marty Wingate, contact her. Cost is \$2,900 for 10-12 days.

**Adjournment:** The meeting was adjourned at 4:50 PM.

*Submitted by: Ora Hickman, JCMGF Secretary*

## Schedule of Events

# May 2011



**May 3 -Fruit Club-**Tri Area Community Center at 7:00 pm

**May 6-**CHS Plant Sale at the CHS greenhouse, 2:20-4:00 pm

**May 8-**Mother's Day

**May 12 Foundation-** "Cooking with Chef Aaron Stark" Spruce Room 2 pm

**May 26-**Trainee Graduation 12:00 pm in the Spruce Room

MG Board Meetings - First Thursday of each month, WSU, 3:00 pm, Madrone Room

MG General Foundation Meetings - Second Thursday of each month , 3-5pm , WSU/Spruce Room

*D*

o you have an item for the Calendar/Schedule of Events? Please submit to the editor at alibruce113@yahoo.com, or call Ali at 360-732-0433. Committee chairs are especially encouraged to submit dates & times of meetings!

Newsletter Deadline: 25th of the month.

Sun	Mon	Tues	Wed	Thurs	Fri	Sat
1	2	3 Plant Clinic WSU 1-4 pm	4	5 JCMG Board Meeting 3 pm	6 Plant Clinic Co-op 2-5 pm	7
8 Mother's Day	9	10 Plant Clinic WSU 1-4 pm	11	12 JCMG Foundation Meeting 2 pm	13 Plant Clinic Co-op 2-5 pm	14
15	16	17 Plant Clinic WSU 1-4 pm	18	19	20 Plant Clinic Co-op 2-5 pm	21
22	23	24 Plant Clinic WSU 1-4 pm	25	26 Trainee Graduation 12:00 pm	27 Plant Clinic Co-op 2-5 pm	28
29	30	31 Plant Clinic WSU 1-4 pm				



WSU Jefferson County Learning Center  
201 West Patison  
Port Hadlock WA 98339